

Perforated Hip & Ridge Shingles *with Sealant*



Brownwood¹

Owens Corning™ Perforated Hip & Ridge Shingles with Sealant add excellent protection and long-lasting beauty to your roof's peak. It also comes in perforated "tabs," making your job faster and simpler.

- Designed with perforated tabs for ease of installation
- Outstanding protection for a roof's ridgeline
- Helps protect ridge vents from weathering
- Compatible with all Owens Corning™ roofing shingles
- Available in a wide range of popular colors

Color availability



Amber†

Not available in Service Areas 1, 3, 4, 5, 7, 9, 12 (see map).



Beachwood Sand†

Not available in Service Area 1, 2, 4, 5, 6, 7, 9, 12, 13 (see map).



Desert Tan†



Driftwood†



Brownwood†

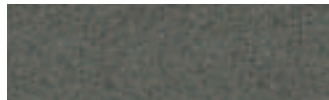


Teak†

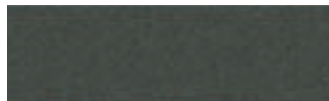
Not available in Service Area 3 (see map).



Onyx Black†



Estate Gray†



Williamsburg Gray†

Not available in Service Areas 1, 3, 4, 5, 7, 9, 12, 13 (see map).



Quarry Gray†



Slatestone Gray†

Not available in Service Areas 2, 3, 4, 5, 6, 7, 9, 12, 13 (see map).



Sierra Gray†

Not available in Service Areas 2, 3, 6 (see map).



Antique Silver†

Not available in Service Areas 1, 2, 4, 5, 6, 7, 9, 12, 13 (see map).



Shasta White†



Harbor Blue†



Colonial Slate†

Not available in Service Areas 2, 3, 6, 12, 13 (see map).



Chateau Green†



Terra Cotta†

Not available in Service Area 13 (see map).

Completing the look of any roof.

DecoRidge Hip & Ridge shingles also coordinate with the *TruDefinition*® *Duration*® Shingles Designer Colors Collection—this unique color-blended application is only available from Owens Corning™ Roofing.



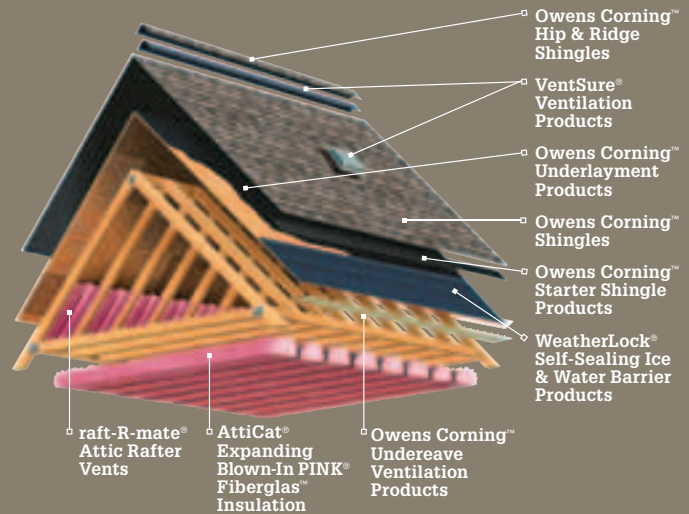
Designer Colors include:

Aged Copper
Merlot
Pacific Wave
Sand Dune
Sedona Canyon
Storm Cloud
Summer Harvest†

Summer Harvest†

The essentials for a healthy roofing system.

It takes more than just shingles to create a high-performance roof. It requires a system of products working together. The Owens Corning™ Roofing System is a lineup of key products that can help provide maximum durability for the roof. And the most protection for the home.



Product Specifications

	Standard	Metric
Nominal Size	12" x 36"	13¼" x 39⅝"
Piece Size	12" x 12"	13¼" x 9⅝"
Exposure	5"	5⅝"
Shingles per Bundle	27	22
Pieces per Shingle/Bundle	3/81	4/88
Lineal Coverage per Bundle	33.75 ft.	41.25 ft.

Only available in Service Area 13.

Applicable Standards and Codes

ASTM D 3161, Class A Wind

ICC ESR 1372

ASTM D 3161, Class F Wind†

UL 790, Class A

ASTM D 3018, Type 1

ASTM D 3462

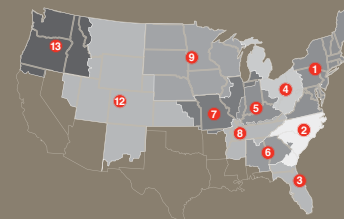
ASTM E 108, Class A

CSA 123.5††

* Applicable in Service Areas 2, 3, 6 (see map).

†† Applicable in Service Areas 1, 4, 5 (see map).

Color availability map



Algae Resistant in Service Areas 1, 2, 3, 4, 5, 6, 7, 9, 13.

† Owens Corning strives to accurately reproduce photographs of shingles. Due to manufacturing variances, the limitations of the printing process and the variations in natural lighting, actual shingle colors and granule blends may vary from the photo. The pitch of your roof can also impact how a shingle looks on your home. We suggest that you view a roofing display or several shingles to get a better idea of the actual color. To accurately judge your shingle and color choice, we recommend that you view it on an actual roof with a pitch similar to your own roof prior to making your final selection. Color availability subject to change without notice. Ask your professional roofing contractor for samples of colors available in your area.



INNOVATIONS FOR LIVING®

**OWENS CORNING
ROOFING AND ASPHALT, LLC**
ONE OWENS CORNING PARKWAY
TOLEDO, OHIO, USA 43659

1-800-GET-PINK®
www.roofing.owenscorning.com

Pub. No. 100965-L. Printed in U.S.A. June 2012. THE PINK PANTHER™ & ©1964–2012 Metro-Goldwyn-Mayer Studios Inc. All Rights Reserved. The color PINK is a registered trademark of Owens Corning. ©2012 Owens Corning.



(Atlanta, Brookville, Denver, Jacksonville, Kearny, Medina, Minneapolis, Portland, Savannah, Summit)