



CommercialComplete™ Wall Systems

Owens Corning™ CommercialComplete™ Wall Systems provide insulation solutions for the performance demands of Exterior Insulation Finish Systems (EIFS) including energy efficiency, moisture management, indoor air quality, sustainability, and energy and building code compliance.

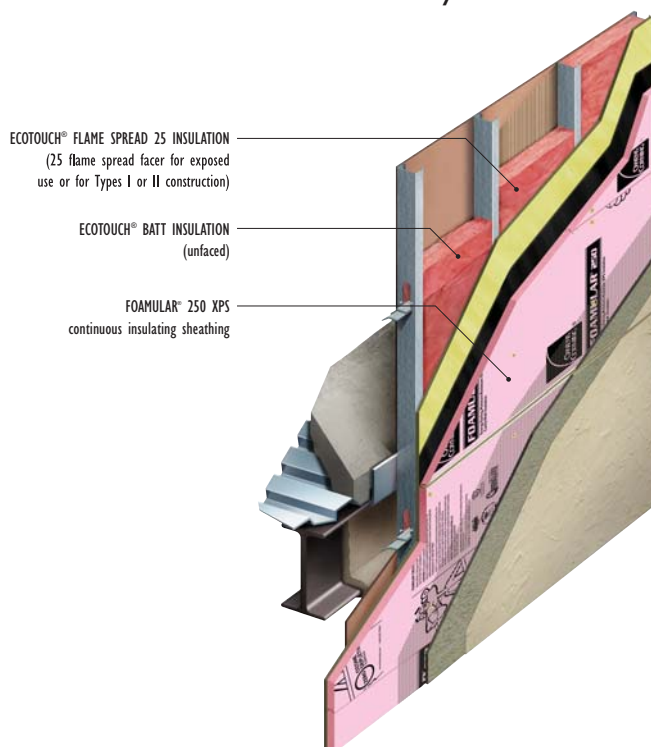
Exterior Insulation Finish Systems (EIFS)

Class PM (polymer modified) EIFS, with water resistant, high strength, FOAMULAR® 250 insulation, is used for exterior walls in new and retrofit commercial and institutional construction where durable continuous insulation and impact resistance are needed, either directly over steel stud framing or over another sheathing layer such as gypsum board or OSB. Traditionally, Class PM EIFS use extruded polystyrene (XPS) insulation, and a thicker, cementitious base coat applied over mechanically attached lath and glass fiber reinforcing mesh. FOAMULAR® XPS insulation is also used in one coat EIFS and traditional stucco systems. Class PB, polymer based, EIFS typically use adhesively fastened lower strength and lower R-value expanded polystyrene (EPS) insulation, and a glass fiber reinforced thin base coat.

FOAMULAR® XPS Rigid Board Insulation

Rigid FOAMULAR® XPS insulation, with high resistance to water absorption is perfect for use as continuous insulation in EIFS. It is available with the standard R 5 per inch of thickness, or, R 5.6 in High-R products, with a variety of edge configurations such as straight, ship-lap or T&G. FOAMULAR® insulation qualifies as a water resistive and air barrier for code compliance when joints are taped with JointSealR® Foam Joint Tape. Steel stud walls with traditional stucco or EIFS cladding comply with NFPA 285 fire test requirements. Consult the EIFS system manufacturer for all system performance details.

Exterior Insulation Finish Systems (EIFS) Continuous Insulation Systems



EcoTouch® Fiberglass™ Batt Insulation

Batt insulation products are available in different thicknesses to achieve a variety of R-values in the stud cavity. They are available in either full widths to fill the hollow voids in C-shaped steel studs, or in widths to fit between wood studs. They are either unfaced, or faced with a variety of facers available to address interior vapor resistance requirements. EcoTouch® Flame Spread 25 insulation has a durable facer with a flame spread rating of 25, suitable for use exposed, or concealed in non-combustible building types as required by the International Building Code (IBC).

Notes

1. Unfaced insulation made with a minimum of 99% by weight natural materials consisting of minerals and plant-based compounds.
2. See actual warranty for complete details, limitations and requirements.



EIFS Insulated Wall Systems

Disclaimer of Liability

Technical information contained herein is furnished without charge or obligation and is given and accepted at recipient's sole risk. Because conditions of use may vary and are beyond our control, Owens Corning makes no representation about, and is not responsible or liable for the accuracy or reliability of data associated with particular uses of any product described herein. Nothing contained in this bulletin shall be considered a recommendation.

GREENGUARD Certified products are certified to GREENGUARD standards for low chemical emissions into indoor air during product usage. For more information, visit ul.com/gg.

LEED is a registered trademark of the U.S. Green Building Council.



OWENS CORNING INSULATING SYSTEMS, LLC
ONE OWENS CORNING PARKWAY
TOLEDO, OHIO 43659
1-800-GET-PINK®
www.owenscorning.com

Pub No. 10019358, Printed in U.S.A. November 2014. THE PINK PANTHER™ & ©1964-2014 Metro-Goldwyn-Mayer Studios Inc. All Rights Reserved. The color PINK is a registered trademark of Owens Corning. © 2014 Owens Corning. All Rights Reserved.

