



# Steel and Wood Stud Framed Insulated Wall Systems

## CommercialComplete™ Wall System

Owens Corning™ CommercialComplete™ Wall Systems provide insulation solutions for the performance demands of stud wall construction including energy efficiency, moisture management, indoor air quality, sustainability, and energy and building code compliance.

## EcoTouch® Fiberglas™ Batt Insulation

Batt insulation products are available in different thicknesses to achieve a variety of R-values in the stud cavity. The products are available in either full widths to fill the hollow voids in C-shaped steel studs, or in widths to fit between wood studs. They are either unfaced or faced with a variety of facers available to address interior vapor resistance requirements. EcoTouch® Flame Spread 25 insulation has a durable facer with a flame spread rating of 25, suitable for use exposed or concealed in non-combustible building types as required by the International Building Code.

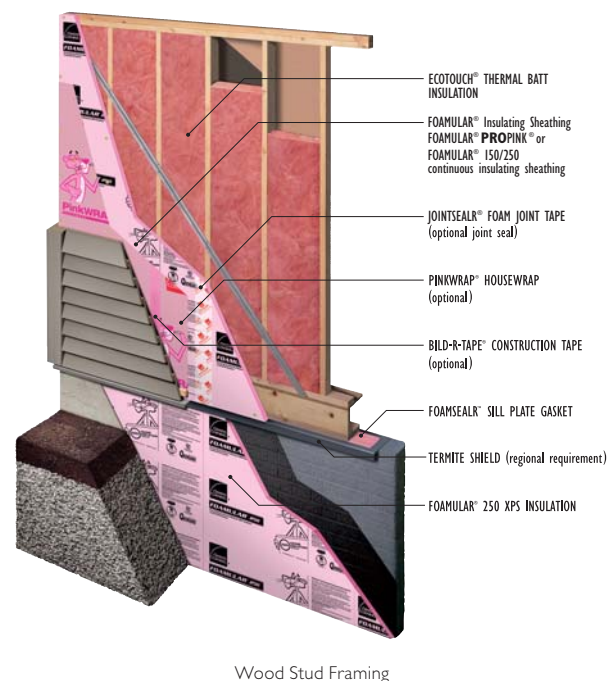
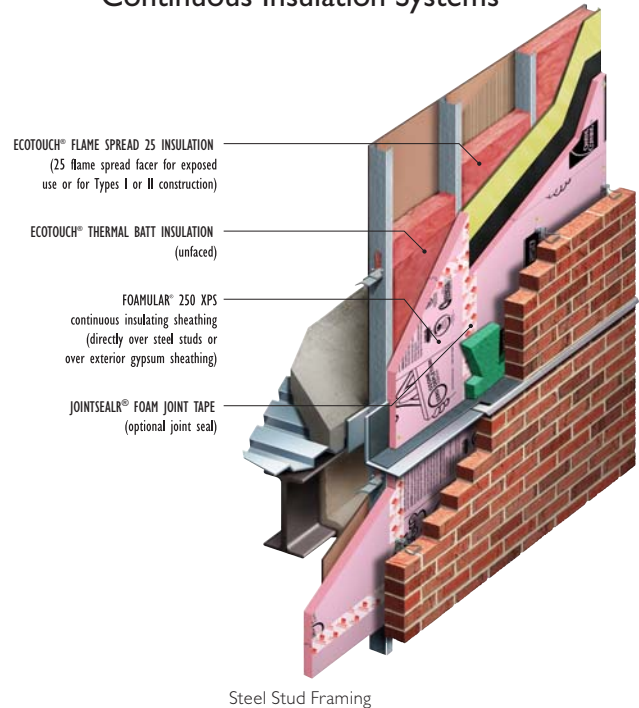
## FOAMULAR® Extruded Polystyrene (XPS) Rigid Board Insulation

Rigid FOAMULAR® XPS insulation is perfect for use as “continuous insulation” either directly over steel stud framing or over another sheathing layer such as gypsum board or OSB. FOAMULAR® insulation is available with the standard R 5 per inch of thickness, or, R 5.6 in High-R products, with a variety of edge configurations such as straight, ship-lap or T&G, and unfaced or faced for added strength. FOAMULAR® insulation qualifies as a water resistive and air barrier for code compliance when joints are taped with JointSealR® Foam Joint Tape. Steel stud walls with a variety of masonry or cement based claddings comply with NFPA 285 fire test requirements. ASTM E119/UL 263 hourly fire rated assemblies are also available.

## JointSealR® Foam Joint Tape

JointSealR® Foam Joint Tape is a flexible, acrylic backed, tape that adheres well to FOAMULAR® XPS insulation in all temperature conditions. It is roller applied over FOAMULAR® XPS continuous insulation joints to create a code compliant water resistive and air barrier.

## Steel and Wood Stud Framed Continuous Insulation Systems



## Notes

1. Unfaced insulation made with a minimum of 99% by weight natural materials consisting of minerals and plant-based compounds.
2. See actual warranty for complete details, limitations and requirements.



# Steel and Wood Stud Framed Insulated Wall Systems

## Disclaimer of Liability

Technical information contained herein is furnished without charge or obligation and is given and accepted at recipient's sole risk. Because conditions of use may vary and are beyond our control, Owens Corning makes no representation about, and is not responsible or liable for the accuracy or reliability of data associated with particular uses of any product described herein. Nothing contained in this bulletin shall be considered a recommendation.

GREENGUARD Certified products are certified to GREENGUARD standards for low chemical emissions into indoor air during product usage. For more information, visit [ul.com/gg](http://ul.com/gg).

LEED is a registered trademark of the U.S. Green Building Council.



**OWENS CORNING INSULATING SYSTEMS, LLC**  
ONE OWENS CORNING PARKWAY  
TOLEDO, OHIO 43659  
**1-800-GET-PINK®**  
[www.owenscorning.com](http://www.owenscorning.com)

Pub No. 10019354. Printed in U.S.A. November 2014. THE PINK PANTHER™ & ©1964-2014 Metro-Goldwyn-Mayer Studios Inc. All Rights Reserved. The color PINK is a registered trademark of Owens Corning. © 2014 Owens Corning. All Rights Reserved.

