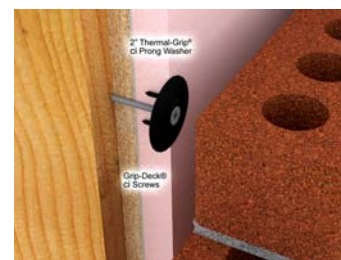
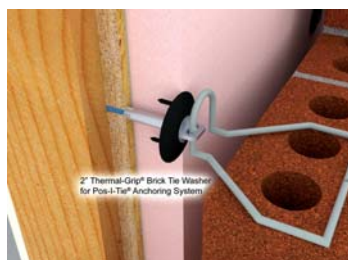


Thermal-Grip® ci prong and brick-tie washers and Grip-Deck® ci ceramic coated screws Insulation Fasteners to attach FOAMULAR® XPS



Description

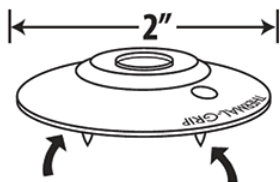
Rodenhouse Inc. insulation fastening systems for CavityComplete™ Wall Systems for Wood Stud with Masonry Veneer includes Thermal-Grip® ci prong washers with Grip-Deck® ci ceramic coated screws for initial insulation attachment; Thermal-Grip® brick-tie washers used with Pos-I-Tie® veneer anchors for permanent insulation attachment. The large 2" diameter washers provide superior resistance to wind blow-off. The solid cap (no keyholes) is designed to seal fastener penetration against air and moisture. Grip-Deck® ci screws are ceramic coated for superior corrosion protection. Thermal-Grip® and Grip-Deck® fasteners are necessary components for all CavityComplete™ ASTM E2357, E331, and NFPA 285 test wall assemblies.



Key Features of

Thermal-Grip® ci prong and brick-tie washers

- Dual-prongs on underside of washers enable pre-spotting on surface of insulation for fast "on-the-wall" fastener assembly
- Solid cap designed to seal against air and moisture
- Large diameter prevents blow-offs
- Plastic washers will not corrode, rot, or support mold growth
- Bullseye hump with stiffened center and flexible perimeter for flush mounting
- Tools available for rapid installation
- Patented or patent pending design
- Made in USA!



PRONGS PRE-SET INTO FOAM

Grip-Deck® ci screws

- Ceramic coated for corrosion protection
- Phillips drive with bugle head mates with Thermal-Grip® ci prong washers



Product Applications

Thermal-Grip® ci prong washers and Grip-Deck® ci ceramic coated screws are used to initially attach FOAMULAR® XPS insulation to substrate (optional tools available including EZ-Driver chuck adaptor and Grip-Lok auto-feed fastening system with Bullseye adaptor). For masonry veneer cavity wall applications use Thermal-Grip® brick-tie washers with Pos-I-Tie® masonry veneer anchors to permanently attach insulation.

Environmental and Sustainability

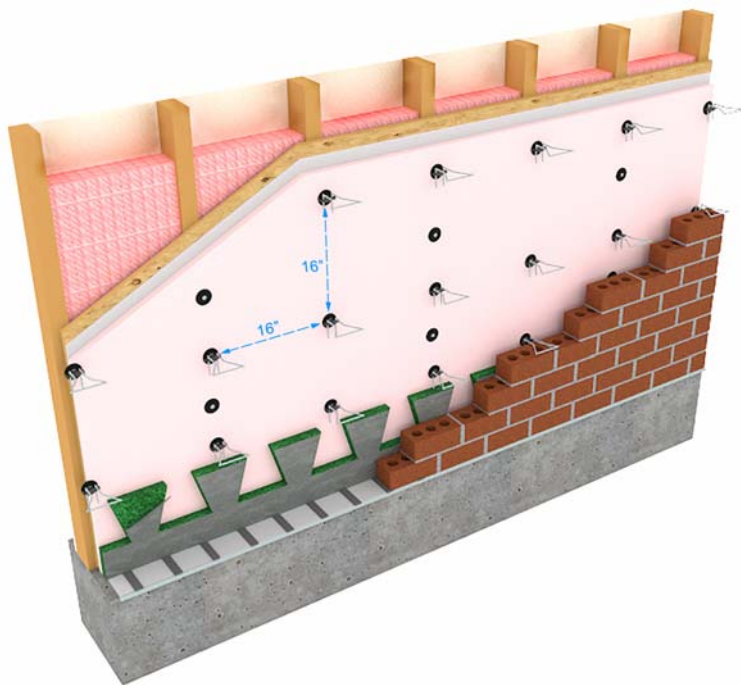
Rodenhouse Inc. strives to deliver environmentally friendly products using the most efficient methods of manufacturing available. Our plastic washers are made from 100% virgin polypropylene (non-recycled for quality assurance) but are 100% recyclable.

Warranty

Please see the CavityComplete™ Wall System for Wood Stud with Masonry Veneer warranty documents for complete details on coverage at www.CavityComplete.com.

Screw length selection guide

Grip-Deck® ci ceramic coated screw length selection guide		
Insulation thickness + 5/8" exterior gypsum (gyp)	Recommended screw length	Quantity per carton
.75" + gyp	2-1/2" x #6	1,000 pcs.
1" + gyp	3" x #8	1,000 pcs.
1.5" + gyp	3-1/2" x #10	1,000 pcs.
2" + gyp	4" x #10	1,000 pcs.
2.5" + gyp	4-1/2" x #10	1,000 pcs.
3" + gyp	5" x #10	1,000 pcs.
4" + gyp	5-1/2" x #10	1,000 pcs.
4.5" + gyp	7" x #10	1,000 pcs.



The CavityComplete™ Wood Stud Wall System excludes the masonry veneer, wood studs, interior gypsum board and exterior sheathing. A detailed list of the components is available at www.CavityComplete.com.

CavityComplete.com | 844-CAV-COMP

Pub. No. 10019821. April 2015. CavityComplete™ is a trademark of Owens Corning. The color PINK is a registered trademark of Owens Corning. © 2015 Owens Corning. All Rights Reserved. Trademarks are the properties of their respective owners.

