

TotalFlash® Cavity Wall Drainage Solution



Description

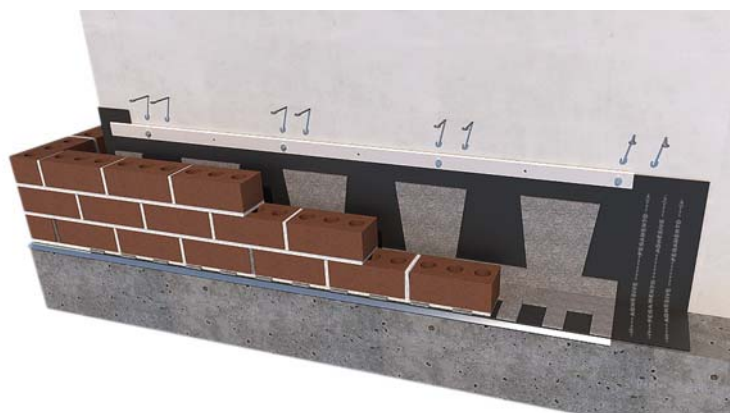
The TotalFlash® Cavity Wall Drainage Solution is a fully integrated flashing and drainage system supplied in 5-1/2' (178.7 cm) - 5' (152.4 cm) net panels, 10 panels/box, 50' (15.2 m) net/box.

Panels consist of: Factory-assembled 0.045" EPDM flashing membrane (with options available), drainage mat with integrated weep tabs, PVC termination bar (with options available), and 26 Ga stainless steel drip edge (with options available).

Drainage mat with no-clog weep tabs standard on all panels: 10" (254 mm) wide x 0.187" (4.76 mm) thick. 90% open-weave polyester mesh.

Also included in each 10-panel box: 1 starter strip for left-to-right installation and 100 self-tapping, self-sealing #14 x 2" hex head termination bar mounting screws.

MPE-1 sealant, CompleteFlash™ inside/outside corner boots, end dams, and adjustable metal drip edge inside/outside corners sold separately.



*TotalFlash® pre-assembled panels
5-1/2' (5' net) panel (167.6 cm (152.4 cm net))*

Available Components

Flashing Membrane

0.045" EPDM through-wall flashing standard membrane size: 18" (457.2 mm) wide x 0.045" (1.14 mm) thick. Additional available widths: 12" (304.8 mm), 24" (609.5 mm). Custom widths and membrane options available on request.

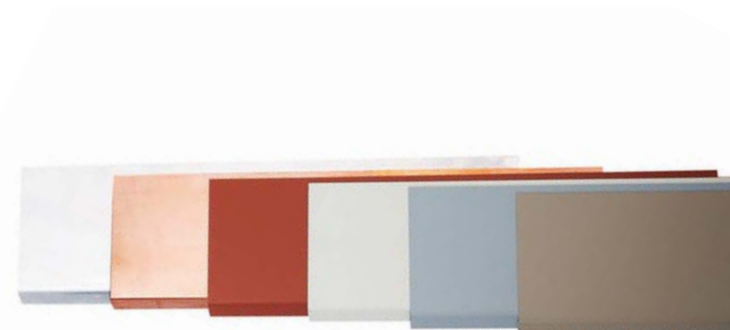
Termination Bar

- Standard PVC: 1.125" (28.6 mm) wide x 0.125" (3.2 mm) thick x 10' 0" (3.05 m) long. UV stable, non-migratory plasticizers, high strength, corrosion resistant. Stainless steel options available.

Termination bar: PVC

Standard Metal Drip Edge

- Standard drip edge: Stainless steel 3/8" (9.5 mm) hemmed edge, 100% recyclable, 3.0" (76.2 mm) wide x 26 GA thick



Left to right: Stainless Steel, Cold-Rolled Copper, Kynar-coated galvanized steel in 4 color choices — Terra-Cotta, Almond, Gray, Tan.

Additional Available Drip Edges

- Cold-rolled Copper: 3/8" (9.5 mm) hemmed edge, 100% recyclable
- Kynar-coated galvanized steel: 3/8" (9.5 mm) hemmed edge, 4 color choices (Almond, Tan, Gray, Terra-Cotta)

Sealant

- MPE-1 Modified Polyether: 10.3 Fl. oz (304.6 ml)/tube, moisture cured, nonflammable, low VOC content, superior adhesion to multiple substrates, 10 month shelf life

Adjustable Metal Drip Edge Corner

- Adjustable metal drip edge corners. Field adjustable to any angle from 325° to 22°. Each leg is 7-1/2" (190.5 mm) long x 3" (76.2 mm) wide. Available in metal to match all straight drip edge options

CompleteFlash™ Flashing Components

- PVC Inside/Outside Corner Boots: 14" (355.5 mm) high x 6" (152.4 mm) wide x 6" (152.4 mm) long. Extend above standard flashing height
- PVC End dams: Right and left — 3" (76.2 mm) high x 4" (101.5 mm) wide x 6" (152.4 mm) long. Universal — 3" (76.2 mm) high x 4" (101.5 mm) wide x 4" (101.5 mm) long



*CompleteFlash™ PVC Components (left to right)
14" High Outside Corner Boot, Universal end dam, 14" High Inside Corner Boot, Left and Right end dams.*



Adjustable metal drip edge corners

The CavityComplete™ Concrete Masonry Unit (CMU) Wall System excludes the masonry veneer and concrete masonry units. A detailed list of the components is available at www.CavityComplete.com.