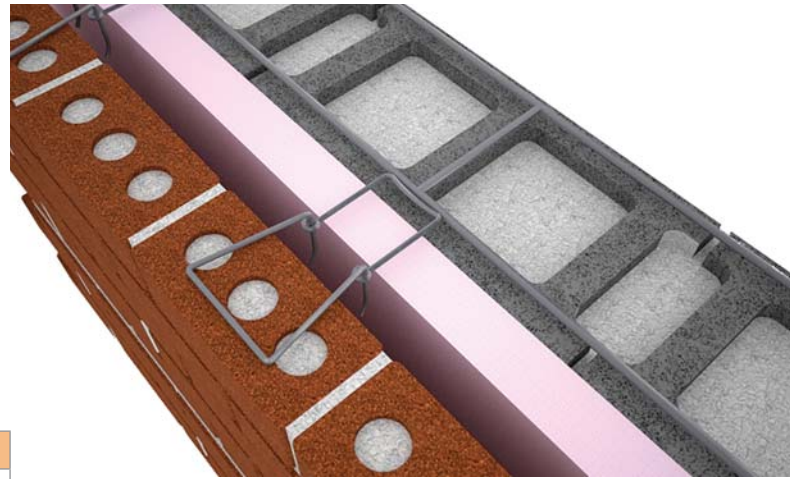




## Hook and Ladder Joint Reinforcement

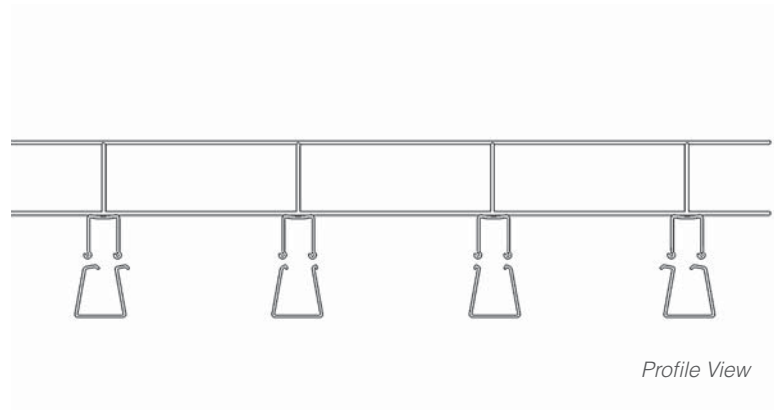
- Ladder Style Adjustable Joint Reinforcement with “Lollipop” style Eyelets and Pintles.
- Eyes are double welded on to side wires to provide maximum strength and durability.
- Level Eyes make it easier to maintain 3/8" mortar joint.
- Allows use of 3/16" side rods.
- Eliminates weld points that are too thick. Meets ASCE/ACI 530 building code requirements for masonry structures and ASTM A 951 (standard specification for masonry joint reinforcing).



*Application View*

Gauges	Finishes	Block Sizes
Standard Weight ( 9ga x 9ga) Heavy ( 3/16" Side Rods x 9ga Cross Rods) Extra Heavy (3/16" Side Rods x 3/16" Cross Rods) Double Eyes are 3/16" diameter standard	Hot Dip Galvanized Stainless Steel	4", 6", 8", 10", 12", 14"

Material Conformance
ASTM A82 / A82M (Cold drawn steel wire) Tensile Strength: 80,000 psi - Yield Point: 70,000 psi
ASTM A951 / A951 M-06 (Standard Specification for Steel Wire for Masonry Joint Reinforcement)
ACI / ASCE 530 (Building code requirements for masonry structures Mill Galvanized / Zinc Coating: ASTM A641 / A641 M (0.1 0 Oz per sq ft) Hot Dip Galvanized after fabrication / Zinc Coating: ASTM A1 53 / A1 53M-B2 (1 .50 oz per sq ft) Stainless Steel ASTM 580 / 580M Type 304 (Type 316 available on special orders)



*Profile View*

The CavityComplete® Concrete Masonry Unit (CMU) Wall System excludes the masonry veneer and concrete masonry units. A detailed list of the components is available at [www.CavityComplete.com](http://www.CavityComplete.com).