

Roofing Air & Water Membrane to Wall  
 Prosoco R-Guard® FastFlash® to  
 Create Continuous Air & Water Barrier

Mortar Net Solutions™ WeepVent® @  
 24" O.C. Max.

Heckmann Building Products  
 Pos-I-Tie® w/ ThermalClip® Pintle Wire  
 Tie & Rodenhouse, Inc. Thermal-Grip®  
 Brick Tie Washer

Prosoco R-Guard® FastFlash®

Owens Corning® FOAMULAR®  
 CW25 XPS

Air Space (1" Min. - 2" Max.)

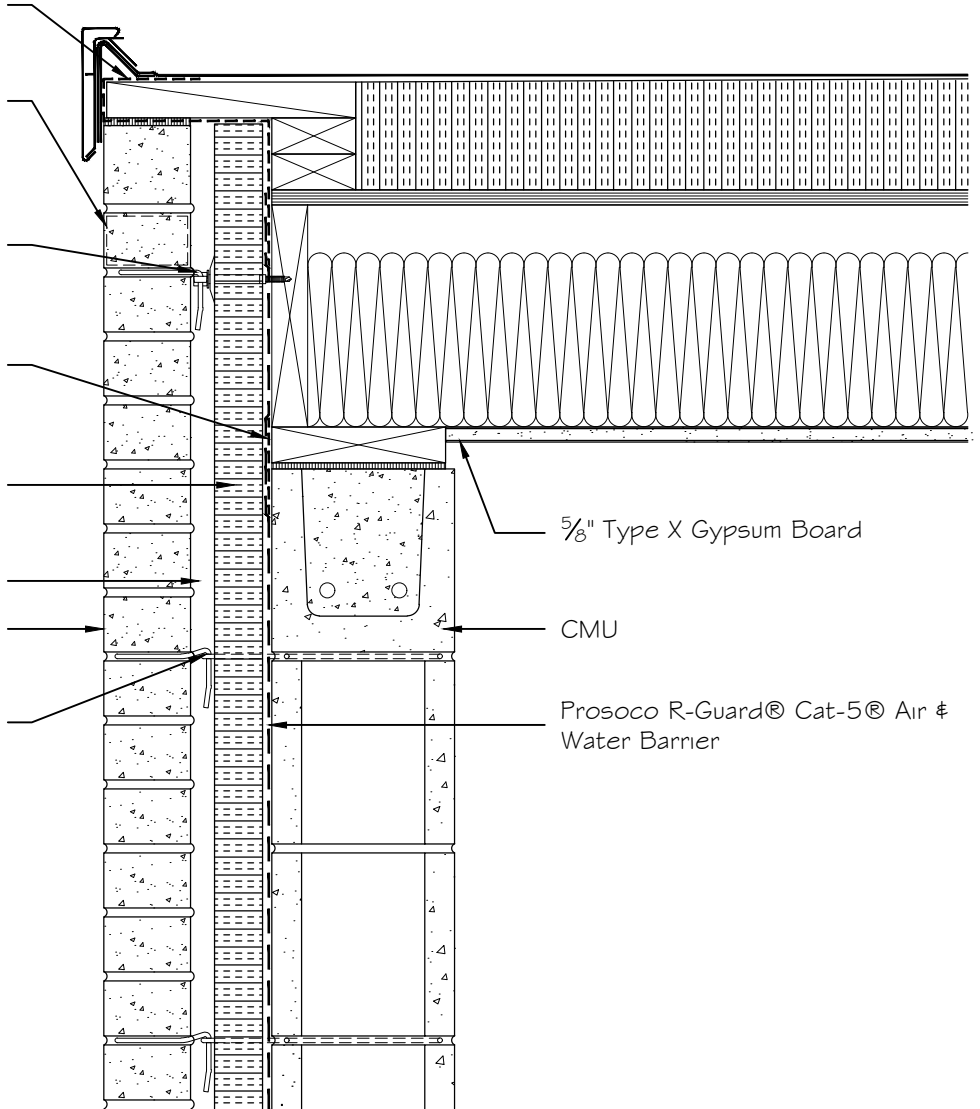
Face Brick

Heckmann Building Products #1300  
 Hook & Ladder Joint Reinforcement  
 @ 16" O.C. with Pintle Wire Tie

5/8" Type X Gypsum Board

CMU

Prosoco R-Guard® Cat-5® Air &  
 Water Barrier



Wall to Gravel Stop/Roof Transition

Date: 10-12-16

Dwg. no. CC-CM-10

Vertical Section

NOTE: This drawing is a general reference intended to show common wall system assembly. Actual details for each product will vary, therefore, details for each project must be reviewed and approved by the Architect of Record. Refer to Manufacturers' Product Literature for product data and installation instructions. Manufacturers assume no responsibility for final project drawings or field installation.