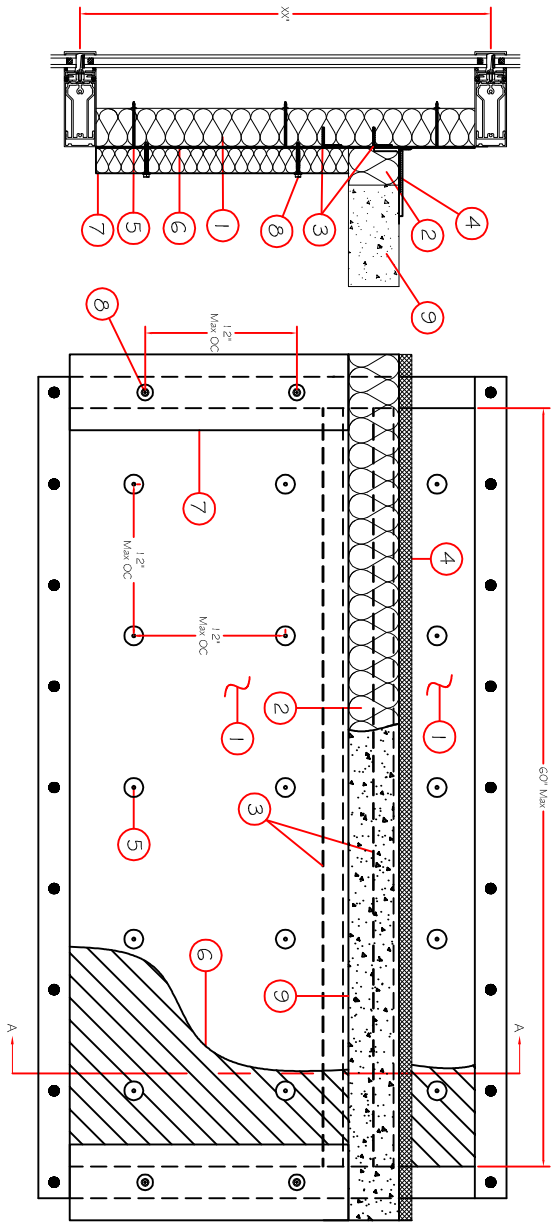


Item Number	Description
1	Min. 3" Thick Owens Corning® Thermafiber® Foil Faced Firespan® 90 mineral wool insulation.
2	Owens Corning® Thermafiber® Safing Insulation 4 pcf density mineral wool insulation. Cut to a min. 4 1/2" width and stacked to a thickness which is min. 25% greater than the width of linear gap between the steel backpan and the edge of the concrete floor slab to attain a min. 20% compression in the thickness direction.
3	1 1/2" x 1 1/2" No. 16 gauge steel angles mechanically attached to backpan with self tapping steel screws spaced max 8" O.C. The horizontal legs are located one at 2" below the top of the floor slab and the other 6" below the top of the slab.
4	Special Seal AS200 Elastomeric Spray, Special Safing Spray or Special Fast Tack Spray Smoke Sealant Min. 1/8" thickness, to be applied over anchor plates, Owens Corning® Thermafiber® Safing Insulation and 1/2" overlap on floor and Owens Corning® Thermafiber® Firespan® 90 mineral wool insulation.
5	Normal 3" long No. 12 gauge galvanized steel weld pin with nominal 1 3/8" diameter galvanized steel cup head. Cup head weld pins are welded to the steel backpan and attached through the Firespan 90 at 12" Max O.C.
6	Min. 20 gauge galvanized steel backpan attached to the interior faces of the framing with self drilling self tapping steel screws spaced 8" max O.C.
7	Mullion Covers - Owens Corning® Thermafiber® Firespan® 90 2" thick mineral wool insulation faced on one side with aluminum foil/scrim vapor retarder, supplied in min. 24" x 48" boards. Nom 6" wide strips to be centered over mullions. Mullion covers to abut the forming material above and below the floor.
8	Attach Owens Corning® Thermafiber® Firespan® 90 Mullion Covers to interior face of vertical mullions with Min No. 10 machine screws spaced 12" Max O.C. with min 1 1/2" diameter steel washers.
9	Floor Slab Min. 4 1/2" thick reinforced lightweight or normal weight (100 - 150 pcf) structural concrete.



Cross Section View AA

Elevation View

CONFIDENTIAL AND PROPRIETARY INFORMATION OF THERMAFIBER INC.
 THESE DRAWINGS ARE THE SOLE AND EXCLUSIVE PROPERTY OF THERMAFIBER AND CONTAIN SENSITIVE, PRIVILEGED, OR CONFIDENTIAL INFORMATION WHICH MAY BE USED ONLY FOR ITS BENEFIT. THE DISCLOSURE OF THESE DRAWINGS TO UNAUTHORIZED PERSONS IS STRICTLY PROHIBITED. THIS DOCUMENT AND ALL COPIES MUST BE KEPT UNDER PROTECTIVE AND CONTROLLED ACCESS. ALL THERMAFIBER PRODUCTS ARE INSTALLED AS SHOWN.
 © COPYRIGHT THERMAFIBER, INC. 2014

Date	Rev. Num.	Description

Job Name: _____
 Location: City and State: _____

DRAWING NUMBER: _____

Reference UL Design: _____ CW-D-1037

DATE APRV: ____/____/____
 Drawn By: SPR

Dimensions ± 3/16"

Angle ± 2° DATE: _____

