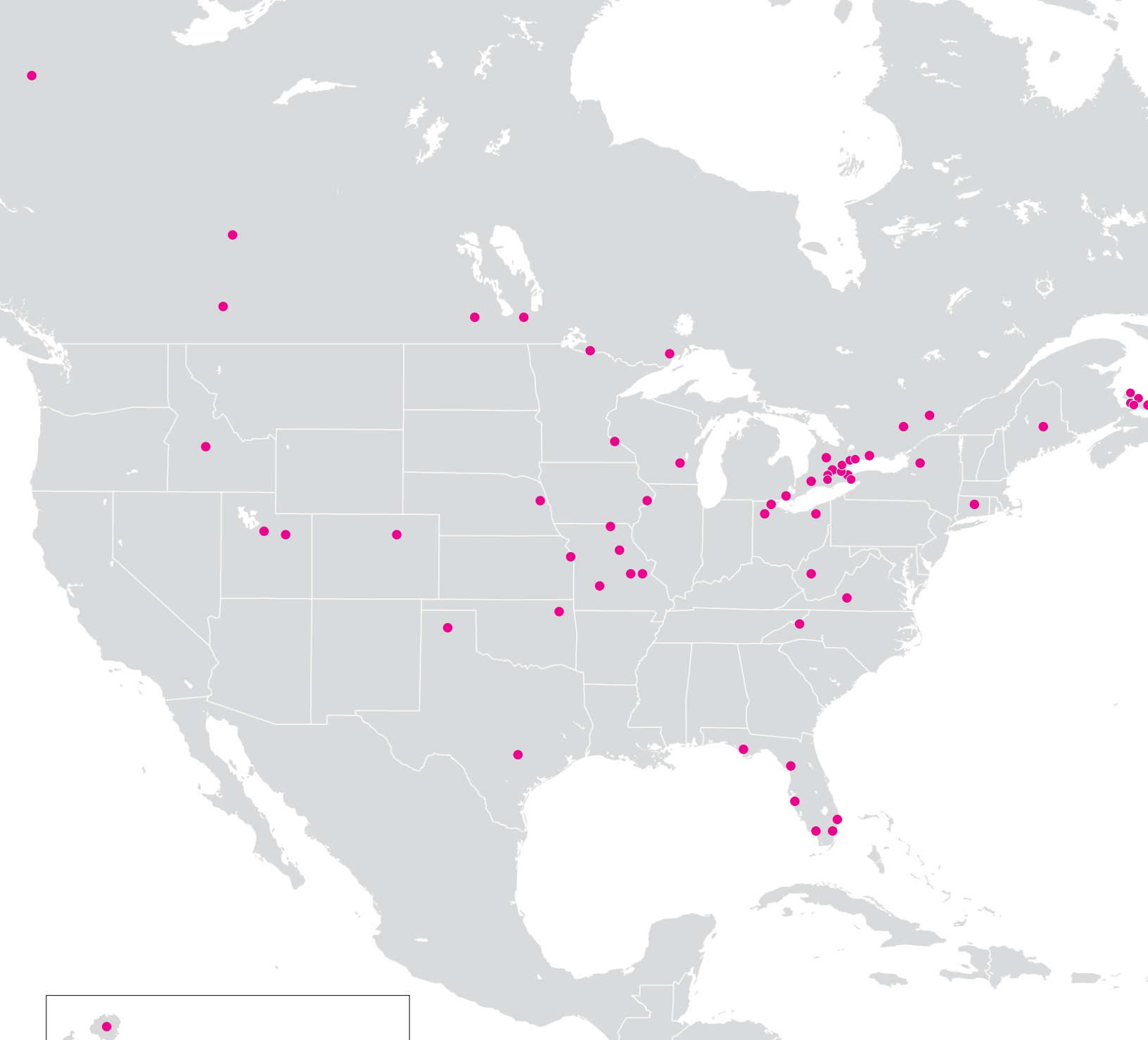




**INFRASTRUCTURE
SOLUTIONS**

FIBERGLAS™ REBAR **PROJECT SHOWCASE**



FIBERGLAS™ REBAR PROJECT LOCATIONS

Select dots on the map to learn more about the project details.
To return back to this page, click on the **Project Locations** button at the bottom of each page.



TRANSPORTATION STRUCTURES REINFORCED WITH FIBERGLAS™ REBAR

PROJECTS	PAGE
United States	
Colorado.....	4
Connecticut	4
Florida.....	5
Hawaii.....	6
Iowa.....	7
Idaho	8
Kansas.....	8
Maine	9
Minnesota	10
Missouri.....	10
Nebraska	12
New York.....	12
North Carolina.....	13
Ohio	13
South Carolina.....	16
Texas.....	17
Utah.....	18
Virginia.....	19
West Virginia.....	19
Wisconsin.....	19
Canada	
Alberta	20
British Columbia	21
Manitoba	21
Ontario	22
Prince Edward Island	24

PROJECTS IN THE U.S.

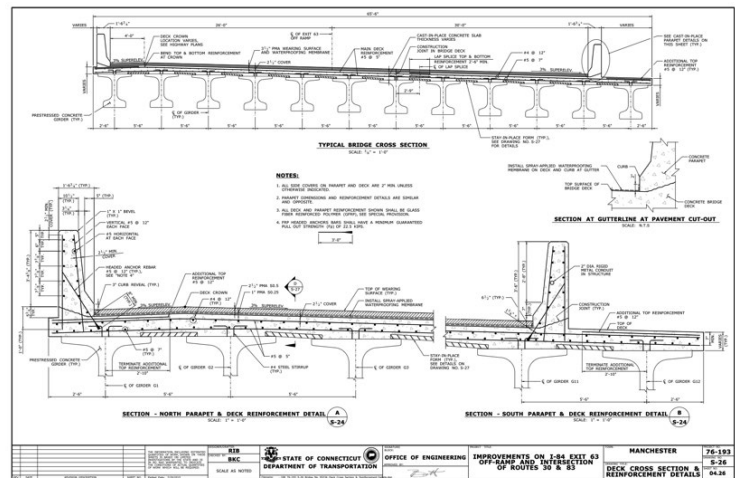
COLORADO		
PROJECT	CITY	YEAR
O'Fallon Park Bridge	Kittredge	2002

PROJECT DETAILS
<ul style="list-style-type: none">Arched concrete bridge with Fiberglas™ rebar in footings, abutments, wing-walls, parapet, and concrete arch; deck surface is all Fiberglas™ rebar (also known as FRP, GFRP or composite rebar).Approximately 4,700 feet³ of concrete reinforced with Fiberglas™ rebarBridge Owner: City and County of Denver, COContractor: Structures, Inc., Denver, COConstructed: Summer 2002Engineer of Record: Parsons Brinckerhoff, Denver, COCore samples were extracted and evaluated as part of ACI SDC durability study, 2019



CONNECTICUT		
HIGHLIGHTED PROJECT	CITY	YEAR
I-84 Bridge	Manchester	2016

PROJECT DETAILS
<ul style="list-style-type: none">106 foot long by 66 feet wide bridge replacementDeck, coping, girder caps, and parapet walls reinforced with Fiberglas™ rebarConstructed: Summer 2016 (currently under construction)Bridge Owner: Connecticut DOT

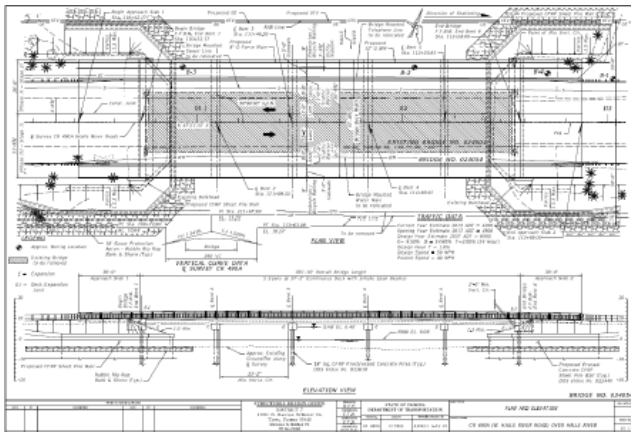


OTHER PROJECTS IN CONNECTICUT	CITY	YEAR
Charter Oak Greenway Pedestrian Bridges	Manchester	2017

FLORIDA		
HIGHLIGHTED PROJECT	CITY	YEAR
Halls River Bridge	Homosassa	2017

PROJECT DETAILS

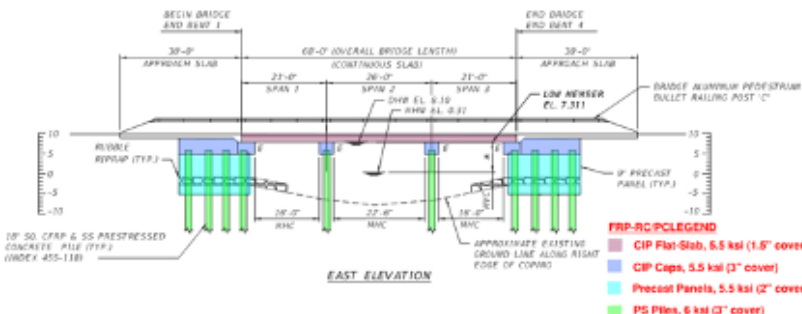
- Owens Corning Infrastructure Solutions was one of multiple suppliers for this landmark Fiberglas™ rebar project
- Constructed with the assistance of FDOT and the University of Miami
- Constructed: Fall 2017
- Owner: Florida DOT



HIGHLIGHTED PROJECT	CITY	YEAR
NE 23rd Ave over Ibis Waterway	Broward County, Lighthouse Point	2020

PROJECT DETAILS

- Replacement of three-span low-level local bridge and abutment bulkheads.
- Bridge Inspection Reports identified deterioration, including evidence of corroded steel reinforcement. Work activities included removal of the existing bridge and bulkhead cap and installation of a new Fiberglas™ rebar-RC flat-slab bridge and seawall-bulkhead with corrosion-resistant master piles and Fiberglas™ rebar-RC precast panels.
- Fiberglas™ rebar bars were used in lieu of traditional Grade 60 carbon-steel rebar in most elements with reduced concrete cover and no added pozzolan material required in the concrete mix design.
- Fiberglas™ rebar used within the splash zone/marine environment.
- Engineer of Record: Sybille Bayard, P.E., CONSOR Engineers, Inc.

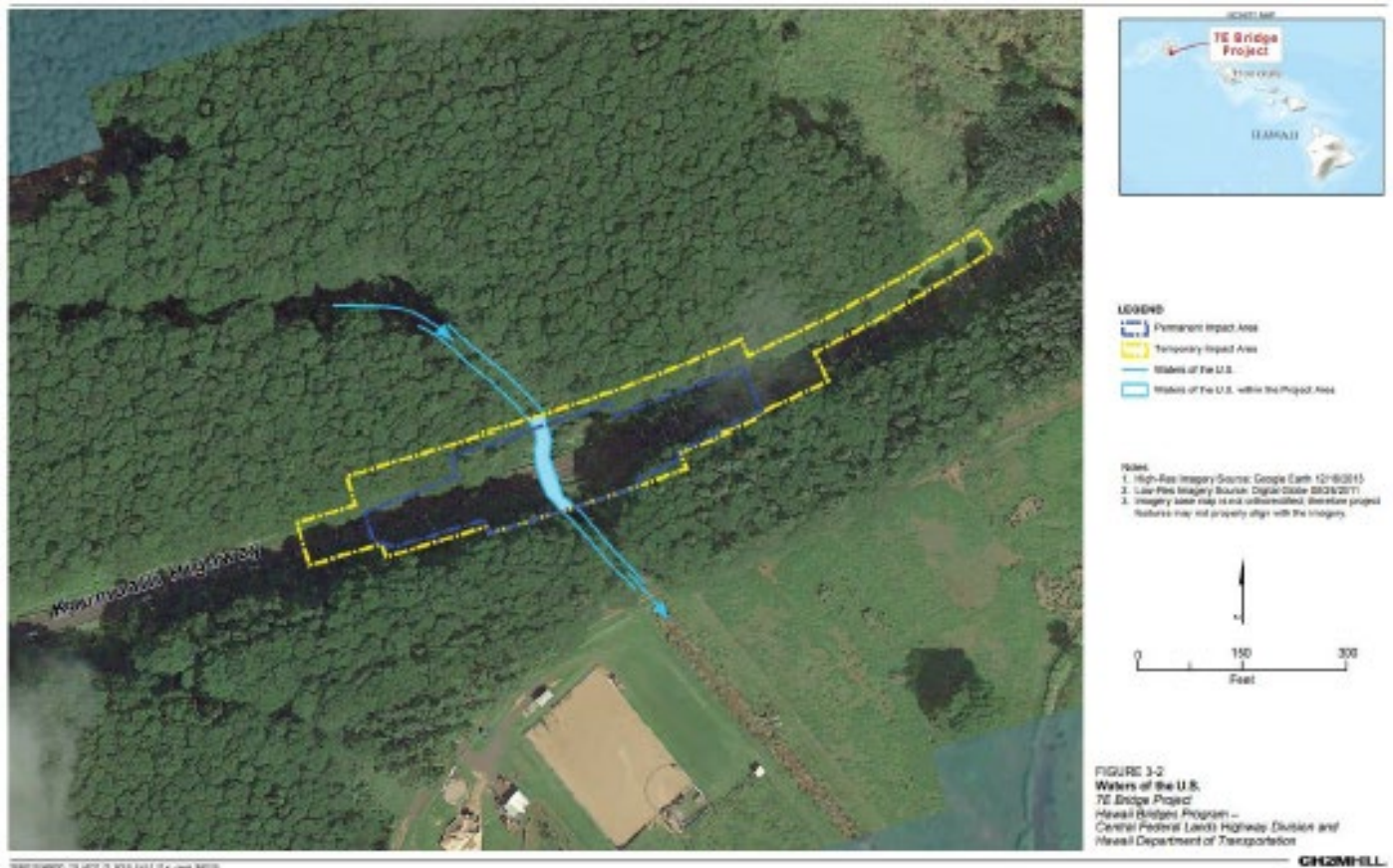


OTHER PROJECTS IN FLORIDA	CITY	YEAR
University of Miami Pedestrian Bridge	Miami	2014
CR-490A Halls River Road over Halls River	Citrus County, Homosassa	Spring 2018
SR45 (US41) NB over North Creek	Sarasota County, Osprey	2019-TBA
SR 30 over St Joe Inlet	Port St. Joe	2020
Chokoloskee Bridge	Everglades City	2016

HAWAII		
PROJECT	CITY	YEAR
Kauai Bridge 7E	Kauai	2017

PROJECT DETAILS

- Located along the Kaumualii Highway on the island of Kauai
- Constructed: Winter 2017/2018
- Bridge Owner: Hawaii DOT



IOWA		
HIGHLIGHTED PROJECT	CITY	YEAR
53rd Avenue Bridge	Bettendorf	2001

PROJECT DETAILS

- Three-span bridge with center span reinforced by Fiberglas™ rebar in top mat
- Deck area reinforced with Fiberglas™ rebar bars 96 feet by 62 feet
- Fiberglas™ rebar bars in median strip
- Contractor: Brandt Construction, Milan, IL
- Constructed: Summer 2001
- Engineer of Record: Schemmer Associates, Omaha, NE
- Bridge monitoring by Iowa State University
- Hughes Brothers, Inc. awarded Iowa Quality Initiative Structures Award — Best Concrete Bridge Constructed on a Local Road System in Iowa 2000–2001 FHWA, IADOT*
- Core samples were extracted and evaluated as part of ACI SDC durability study, 2019



OTHER PROJECTS IN IOWA	CITY	YEAR
Middle Road Bridge over Crow Creek	Bettendorf	2006

* Owens Corning acquired the concrete reinforcement business of Hughes Brothers, Inc. in 2017.

IDAHO	
PROJECT	YEAR
Lake Fork Road SH 97 over I-90 and Succor Creek Bridges	2017

PROJECT DETAILS

- Three projects using Fiberglas™ rebar in barrier walls
- Constructed: 2017
- Owner: Idaho DOT

KANSAS		
PROJECT	CITY	YEAR
I-635 over State Street	Kansas City	2013

PROJECT DETAILS

- Three-span bridge with a 68.5 feet by 228 feet cast-in-place deck
- Top and bottom mats in deck reinforced with Fiberglas™ rebar
- Bridge is on I-635 over State Street in Kansas City, KS
- Bridge Owner: Kansas DOT
- Contact Name: Loren Reisch
- Contractor: Phillips Grading
- Constructed: Summer 2013
- Engineer of Record: Jon Karst



MAINE

HIGHLIGHTED PROJECT

CITY

YEAR

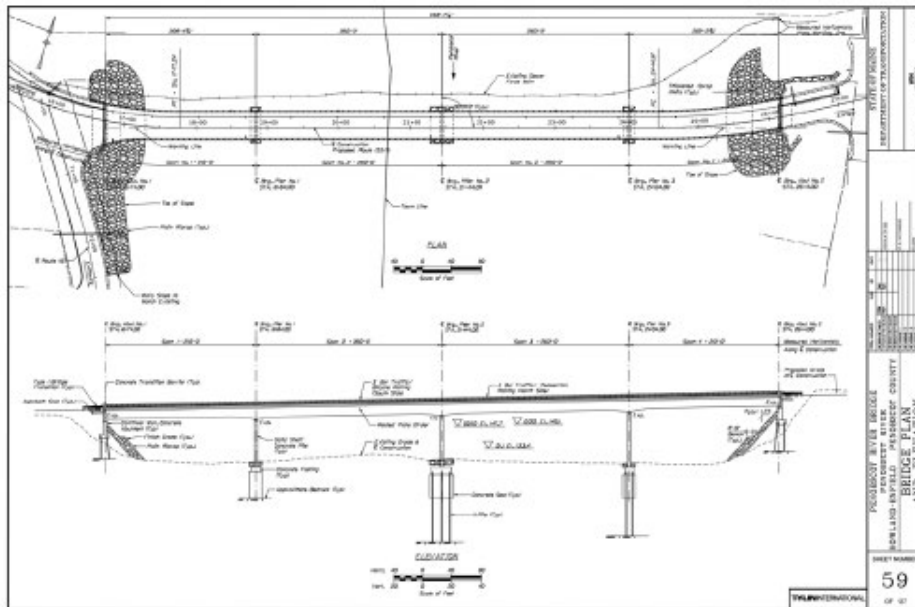
Penobscot River Bridge

Howland

2016

PROJECT DETAILS

- Four-span bridge totaling 940 feet in length by 40 feet wide
- Elements reinforced with Fiberglas™ rebar include:
 - Precast, prestressed deck panels
 - Deck slab
 - Sidewalks/curbs
- Constructed: Summer 2016
- Bridge Owner: Maine DOT



OTHER PROJECTS IN MAINE

Barrell Bridge – Full deck reinforced using Fiberglas™ rebar – Maine DOT

Burnham Bridge – Full deck reinforced using Fiberglas™ rebar – Maine DOT

Hunter Cove Bridge – Full deck reinforced using Fiberglas™ rebar – Maine DOT

Billings Bridge – Full deck reinforced using Fiberglas™ rebar – Maine DOT

French Road Bridge – Concrete overlay reinforced using #3 Fiberglas™ rebar – Maine DOT

New Crane Bridge – Full deck reinforced using Fiberglas™ rebar – Maine DOT

Sandy River Plantation Bridge – Full deck reinforced using Fiberglas™ rebar – Maine DOT

MINNESOTA		
PROJECT	CITY	YEAR
T.H. 42 Dry Creek	Wabasha	2016

PROJECT DETAILS

- 84-foot-long single-span bridge
- Constructed: Summer 2016 (currently under construction)
- Bridge Owner: Minnesota DOT

MISSOURI		
HIGHLIGHTED PROJECT	CITY	YEAR
Boone County Bridge	Columbia	2007

PROJECT DETAILS

- Multi-span bridge with deck areas 25 feet by 212 feet
- Top and bottom mats in deck Fiberglas™ rebar
- Bridge located on Route Q near Columbia, MO
- Bridge Owner: Missouri DOT
- Contractor: Don Schnieders Excavating
- Constructed: Summer 2007
- Engineer of Record: John Finke



HIGHLIGHTED PROJECT	CITY	YEAR
Schuyler County Bridge	Glennwood	2014

PROJECT DETAILS

- Top and bottom mats in deck reinforced with Fiberglas™ rebar
- Bridge replacement project
- Three spans total, 144 feet in length
- Constructed: Summer 2014
- Bridge Owner: Missouri DOT



OTHER PROJECTS IN MISSOURI	CITY	YEAR
Box Culvert Bridge	Rolla	1999
Southview Bridge	Rolla	2004
Green County Bridge	Springfield	2005
Washington County Bridge	Potosi	2012

NEBRASKA

PROJECT	CITY	YEAR
Elkhorn Bridge	Washington	2015

PROJECT DETAILS

- Top and bottom mats in deck reinforced with Fiberglas™ rebar
- Bridge deck replacement project
- Constructed: Summer 2015
- Bridge Owner: Nebraska DOT



NEW YORK

PROJECT	CITY	YEAR
Roaring Brook Bridge	Martinsburg	2008

PROJECT DETAILS

- Multi-span bridge with precast deck panels with an area of 26 feet by 38.5 feet
- Top and bottom mats in panels reinforced with Fiberglas™ rebar
- Bridge Cemetery Road over Roaring Brook in Martinsburg, NY
- Bridge Owner: Lewis County
- Contractor: Lewis County
- Constructed: Summer 2008
- Engineer of Record: James Craig

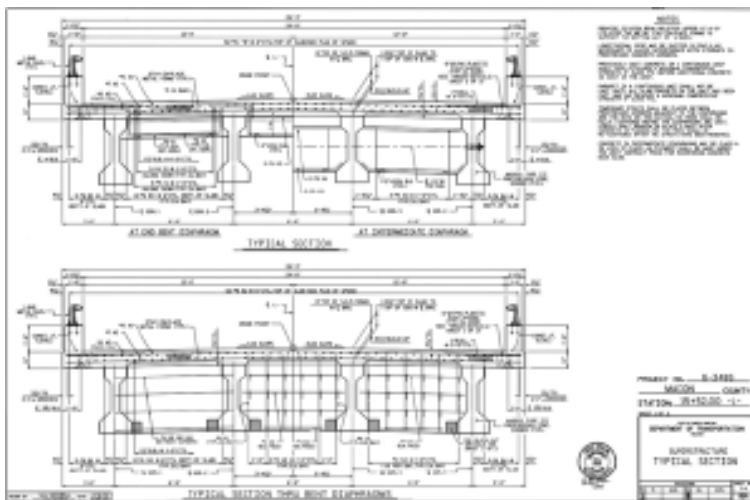


NORTH CAROLINA

PROJECT	CITY	YEAR
Macon County Bridge	Marshall	2004

PROJECT DETAILS

- Cartoogechaye Bridge
- Multiple-span bridge with deck area of 26 feet by 158 feet
- Top mat in deck reinforced with Fiberglas™ rebar
- Bridge located on SR-1001 at Hwy 25 near Marshall, NC
- Bridge Owner: North Carolina DOT
- Contractor: Taylor & Murphy Construction
- Constructed: 2004
- Engineer of Record: William Davis



OHIO

PROJECT	CITY	YEAR
Miles Road Bridge	Tallmadge	2002

PROJECT DETAILS

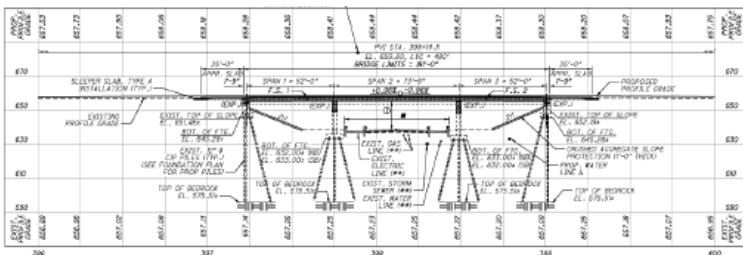
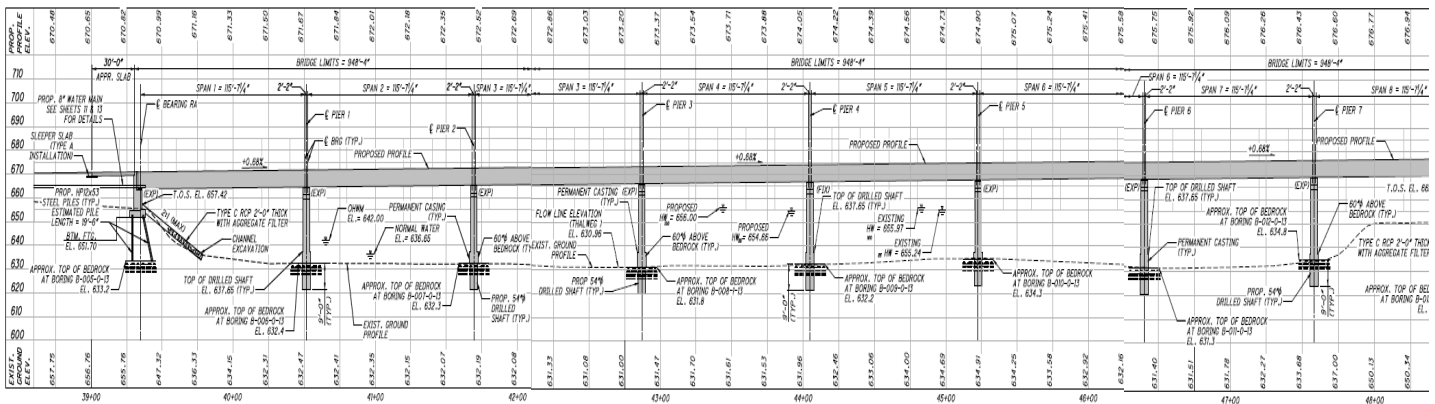
- Two-span bridge with deck area of 38 feet by 90 feet
- Deck reinforcing in top and bottom mat with Fiberglas™ rebar
- Sidewalk overhang also incorporates Fiberglas™ rebar
- Bridge Owner: Cuyahoga County
- Contractor: J.D. Williamson Construction, Tallmadge, OH
- Constructed: Summer 2002
- Engineer of Record: Osborn Engineering, Cleveland, OH
- Bridge monitoring by Case Western Reserve University
- Core samples were extracted and evaluated as part of ACI SDC durability study, 2019



PROJECT	CITY	YEAR
Industrial Drive Bridge	Napoleon	2020

PROJECT DETAILS

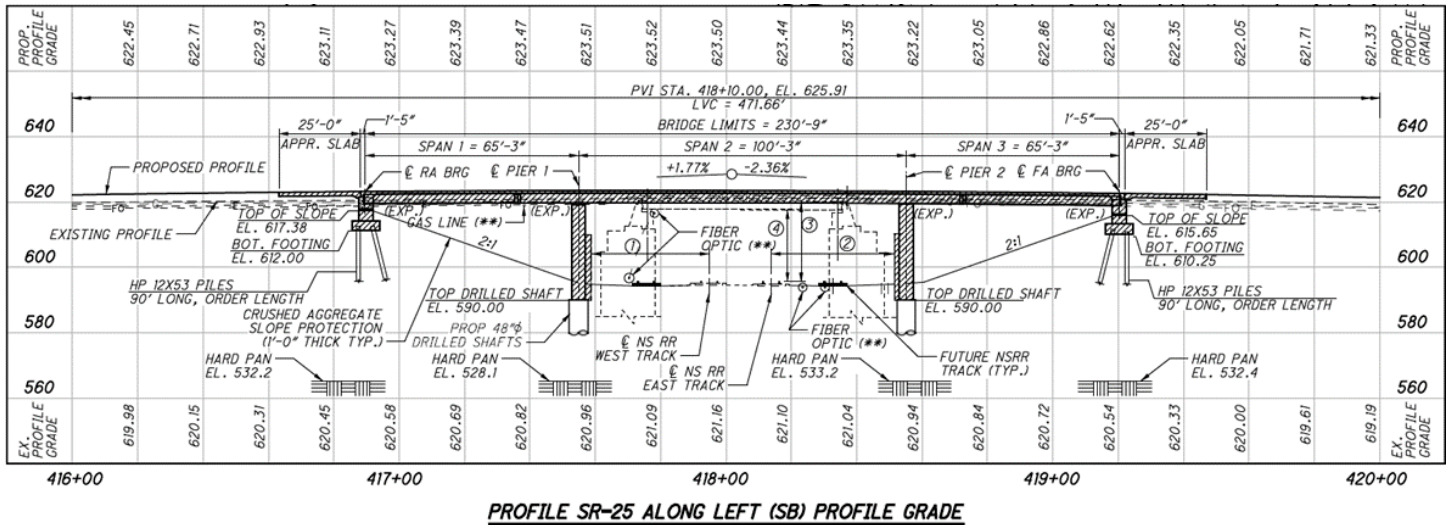
- Construction of new bridge across the Maumee River
 - Eight-span (115 feet, 7 inches) composite prestressed I-beam superstructure on reinforced concrete abutments with cap and column piers
- 28-foot-wide roadway with 6-foot raised sidewalk
- Beam spacing of 10-foot to 11-feet, 7 inches
- Bridge widening and rehabilitation
 - Twin structures
- Three-span (52 feet ~ 73 feet, 6 inches ~ 52 feet) steel beam composite superstructure on semi-integral abutments with cap and column piers
- 60-foot-wide roadway
- Beam spacing of 8 feet



PROJECT	CITY	YEAR
Anthony Wayne Trail Bridge	Toledo	2019

PROJECT DETAILS

- Construction of new bridge across the Maumee River
 - Eight-span (115 feet, 7 inches) composite prestressed I-beam superstructure on reinforced concrete abutments with cap and column piers
- 28-foot-wide roadway with 6-foot raised sidewalk
- Beam spacing of 10 feet to 11 feet, 7 inches



PROJECT	CITY	YEAR
Maumee River Bridge	Henry County	2021

PROJECT DETAILS

- Eight-span structure, 1,000 feet in length with a concrete deck supported by seven piers on drilled shaft foundations
- 472,000 linear feet of Owens Corning Infrastructure Solutions (OCIS) 60GPa Fiberglas™ Rebar
- Constructed: 2021
- Bridge Owner: Ohio Department of Transportation (ODOT) District 2
- Designed by: Mannik & Smith Group Inc.
- Contractors: Vernon Nagel, Inc. (general contractor), Flatrock Bridge Group (rebar subcontractor)



SOUTH CAROLINA

PROJECT	CITY	YEAR
Low Battery Seawall	Charleston	2020

PROJECT DETAILS

- Fiberglas™ rebar used in promenade, concrete rail posts, and the shotcrete repairs to the walls facing the river
- 250,000 linear feet of OCIS 60GPa Fiberglas™ Rebar
- Constructed: 2020 (Phase 1)
- Bridge Owner: City of Charleston
- Designed by: Johnson, Mirmiran & Thompson (JMT)
- Contractors: Gulfstream Construction (general contractor) and Palmetto Gunite (subcontractor)



TEXAS		
HIGHLIGHTED PROJECT	CITY	YEAR
Sierrita de la Cruz Creek Bridge	Amarillo	2000

PROJECT DETAILS

- Located 25 miles north of Amarillo on RM 1061
- 12-span bridge with two spans on end reinforced with top mat Fiberglas™ rebar
- Deck area 45 feet by 160 feet
- Phased construction on prestressed panels placed on girders
- Contractor: Gilvin-Terrill Construction
- Constructed: Fall 2000
- Bridge monitoring by Texas Tech University
- Additional bridge railing pendulum tests and full-scale crash test by TTI
- Core samples were extracted and evaluated as part of ACI SDC durability study, 2019



OTHER PROJECTS IN TEXAS	CITY	YEAR
Howard LN Bridge	Austin	2004
Riverside Underpass	Austin	2013

UTAH		
HIGHLIGHTED PROJECT	CITY	YEAR
Emma Park Bridge	Helper	2009

PROJECT DETAILS

- Single-span bridge with precast deck panels with an area of 88 feet by 89 feet
- Top and bottom mats in panels reinforced with Fiberglas™ rebar
- Bridge US 6 at MP 218.7 over Beaver Creek near Helper, UT
- Bridge Owner: Utah DOT
- Contractor: Creative Concrete
- Constructed: Spring 2009
- Engineer of Record: Gang Gou



OTHER PROJECTS IN UTAH	CITY	YEAR
State St. Bridge	Pleasant Grove	2009

VIRGINIA		
PROJECT	CITY	YEAR
Gills Creek Bridge	Franklin County	2003

PROJECT DETAILS

- Three-span bridge with top mat reinforcing with Fiberglas™ rebar
- Total deck area 30 feet by 170 feet, Fiberglas™ rebar reinforced 30 feet by 45 feet
- Bridge located over Gills Creek on Route 668 in Franklin County, VA
- Bridge Owner: Virginia DOT
- Contractor: A.R. Coffey & Sons of Buchanan, VA
- Constructed: Summer 2003
- Core samples were extracted and evaluated as part of ACI SDC durability study, 2019



WEST VIRGINIA		
PROJECTS	CITY	YEAR
North Kayford Bridge	Charleston	2000
North Acme Bridge	Charleston	2000
South Acme Bridge	Charleston	2000

WISCONSIN		
PROJECT	CITY	YEAR
US 151	Waupun	2003

PROJECT DETAILS

- Two-span bridge with deck area of 43 feet by 107 feet
- Deck reinforcing with Fiberglas™ rebar grid, stay-in-place formwork and augmented by Fiberglas™ rebar
- Bridge located on US Hwy 151 Near Waupun, WI
- Bridge Owner: Wisconsin DOT
- Site Engineering Firm: CH2M Hill
- Contractor: Lunda Construction
- Constructed: Summer 2003

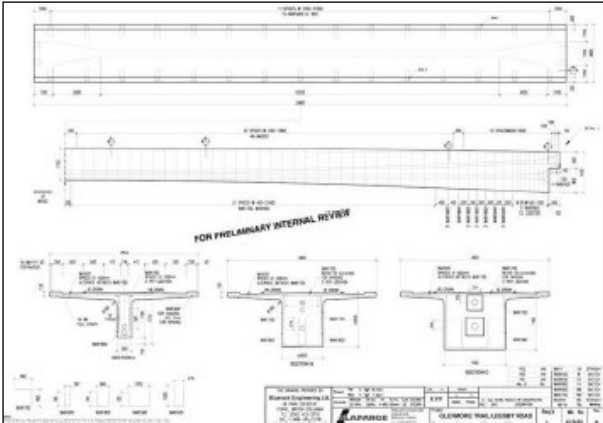


PROJECTS IN CANADA

ALBERTA		
HIGHLIGHTED PROJECT	CITY	YEAR
Glenmore Trail Pedestrian Bridge	Calgary	2006

PROJECT DETAILS

- Single-span bridge with deck areas 12 feet by 110 feet
- Single mat in deck and structural reinforcing in girder with Fiberglas™ rebar
- Bridge located over Glenmore Causeway at Legsby Road in Calgary, AB
- Bridge Owner: City of Calgary
- Contractor: Lafarge
- Constructed: Summer 2006
- Engineer of Record: Bluerock Engineering



OTHER PROJECTS IN ALBERTA	CITY	YEAR
Bow Trail Bridge	Calgary	2008
Smith River Bridge	Edmonton	2006

BRITISH COLUMBIA

PROJECT	CITY	YEAR
Trout River Bridge	-	2003

PROJECT DETAILS

- Single-span bridge with deck area 40 feet by 200 feet
- Deck reinforcing in top mat with Fiberglas™ rebar
- Bridge located on km 732 of Alaska-Canada Highway
- Bridge Owner: Ministry of Transportation, British Columbia
- Contractor: Precision Contracting Inc., Prince George, BC
- Constructed: Summer 2003
- Engineer of Record: Delcan
- Bridge monitoring by conventional and fiber-optic stain gauges and accelerometers in real time with internet access; performed by ISIS Canada



MANITOBA

HIGHLIGHTED PROJECT	CITY	YEAR
Red River Floodway Bridge on TCH #1E	Winnipeg	2006

PROJECT DETAILS

- Two multi-span bridges, each with deck areas 50 feet by 1,142 feet
- Deck reinforcing in top and bottom; mats with Fiberglas™ rebar
- Bridge located near the intersections of Hwy 1 and Hwy 100 in Winnipeg, MB
- Bridge Owner: Manitoba Floodway Authority
- Contractor: M.D. Steele
- Constructed: Summer 2006
- Engineer of Record: B.L. Lau

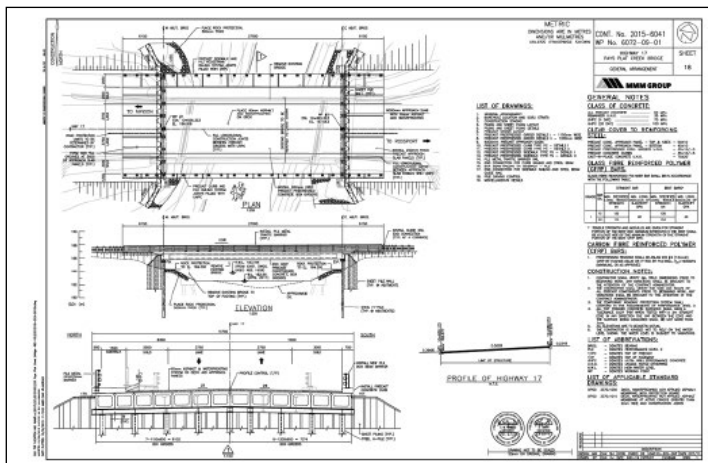


OTHER PROJECTS IN MANITOBA	CITY	YEAR
Floodway Bridge on PTH 15	—	2010
18th St. Bridge	Brandon	2009
South Perimeter Bridge of the Red River	Winnipeg	2006

ONTARIO		
HIGHLIGHTED PROJECT	CITY	YEAR
Pays Plat River Bridge	Thunder Bay	2016

PROJECT DETAILS

- 129-foot-long (including abutments) by 52-foot-wide bridge replacement project
- Elements reinforced with Fiberglas™ rebar include:
 - Precast prestressed box girders
 - Precast prestressed curbs and sidewalks (prestressed with Fiberglas™ rebar)
 - Precast approach slabs
- Constructed: Summer 2016 (currently under construction)
- Bridge Owner: Ministry of Transportation, Ontario



OTHER PROJECTS IN ONTARIO	CITY	YEAR
Brant Bowstring Bridge	Brantford	2006
CNR Waterdown Road Bridge	Burlington	2008
Main Street Bridge	Cambridge	2008
Mather Creek Bridge	Emo	2008
Benham Bridge	Guelph	2013
County Road 17 Bridge	Hawkesbury	2008
Cherry Ave Bridge	Lincoln	2006
Clarke Road Bridge	London	2004
Louis St. Laurent Bridge	Milton	2013
Eglinton Ave Bridge	Mississauga	2008
Wyandot Bridge	Moorefield	2016
Ottawa Pedestrian Bridge	Ottawa	2006
Bronson Ave Canal Bridge	Ottawa	2008
Baden Creek Bridge	Toronto	2007
Queen St. Bridge	Toronto	2007
Maple Leaf Square Bridge	Toronto	2007
CPR Overhead Bridge	Port Hope	2014
Rockcliffe Bridge	Toronto	2007
Bloor Street Bridge	Toronto	2010
John St. CNR	Toronto	2012
Lake Shore Boulevard Bridge	Toronto	2013
Becketts Bridge	Wainfleet	2006
3rd Concession Road Bridge	Windsor	2008

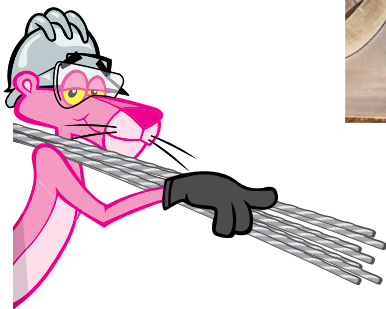
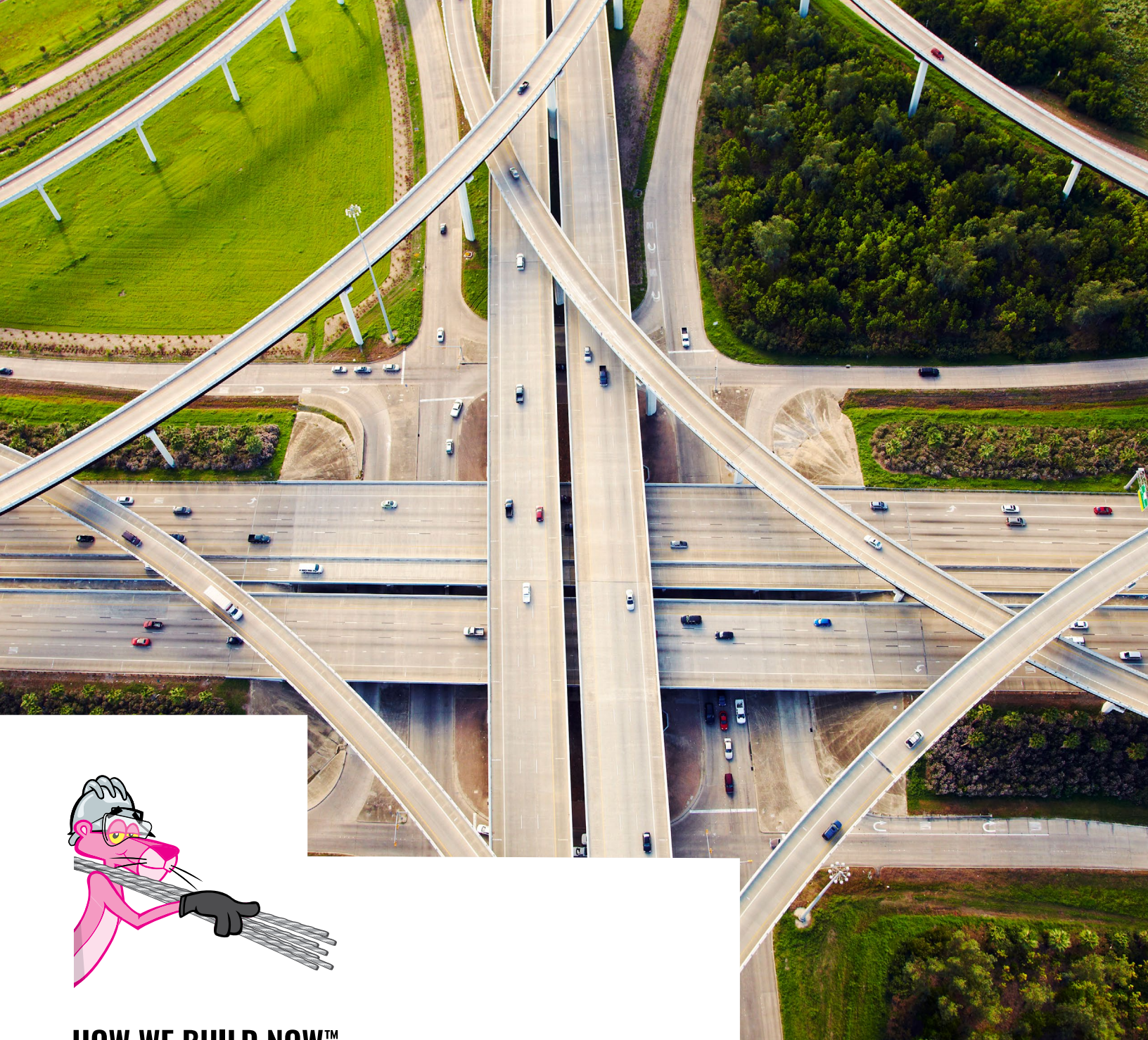
PRINCE EDWARD ISLAND		
HIGHLIGHTED PROJECT	CITY	YEAR
Darnley Bridge	Darnley	2010

PROJECT DETAILS

- Four-span bridge with a 42 feet by 449 feet cast-in-place deck
- Top and bottom mats in deck reinforced with Fiberglas™ rebar
- Bridge is on Route 20 near Darnley, Prince Edward Island
- Bridge Owner: Prince Edward Island Department of Transportation and Public Works
- Contractor: Highfield Construction
- Constructed: Spring 2010
- Engineer of Record: Alicen Thorne



OTHER PROJECTS IN PRINCE EDWARD ISLAND	CITY	YEAR
Oak Drive Bridge	Charlottetown	2010
Ross' Corner Bridge	North Bedeque	2011
Montrose Bridge	Prince County	2008
Clark's Mill Bridge	Summerside	2007



HOW WE BUILD NOW™



INFRASTRUCTURE SOLUTIONS

Owens Corning Infrastructure Solutions, LLC

One Owens Corning Parkway
Toledo, OH 43659 USA
1-855-OC-Rebar

<https://www.owenscorning.com/rebar>