

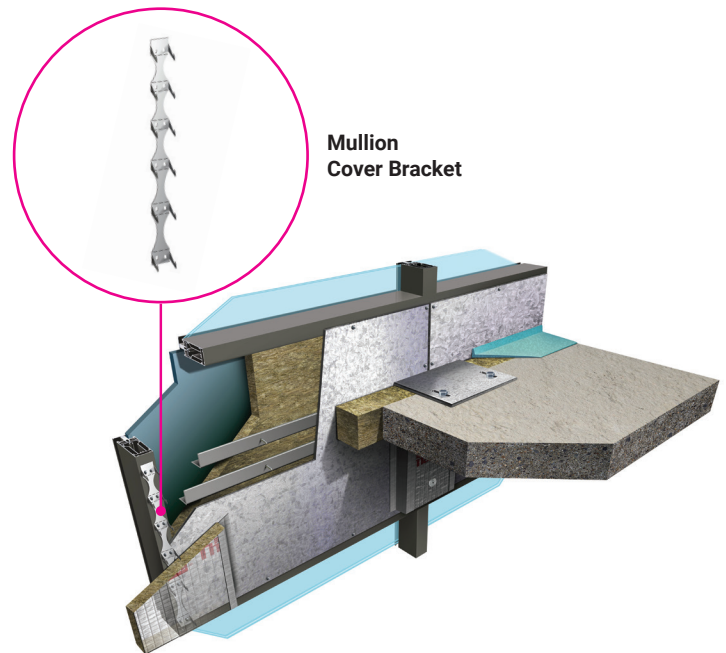


# TECHNICAL BULLETIN

## THERMAFIBER® MULLION COVER BRACKET

The patented Thermafiber® Mullion Cover Bracket (MCB) is a unique mechanical attachment designed to address installation issues often caused by deep slab conditions in high-rise buildings. Fire-rated perimeter fire containment systems, tested in accordance with ASTM E2307, most often require a critical design element in the system referred to as mullion cover insulation. Mullion cover insulation is installed over the aluminum vertical framing to protect it from melting and to slow the erosion of the framing under fire exposure. The protection of the framing is necessary to maintain the vertical attachment used to secure the spandrel insulation in place and ultimately plays a key role in achieving published fire ratings and preventing vertical fire spread in multi-story buildings.

Traditional methods of installing mullion covers include impaling pins screwed to the face of mullions every 12 inches o.c. Another method is the use of spiral anchors that require attachment every 12 inches o.c. on both sides of the mullion cover insulation. Construction constraints, such as deep slabs, I-beams or galvanized backpans, limit the ability to properly install mullion covers at required attachment frequency.



### FIRE PERFORMANCE TESTING

Side-by-side comparison testing was conducted at Underwriters Laboratories. Testing parameters compared thermocouple data, ensuring that the new attachment method met or exceeded the performance of traditional methods. During this study, the Thermafiber® MCB exceeded the performance of the traditional attachment method and was approved by Underwriters Laboratories as an alternate method for securing mullion covers. This allows the Thermafiber® MCB to be used in any Thermafiber® listed curtain wall systems as a substitute for traditional mullion cover attachment methods.



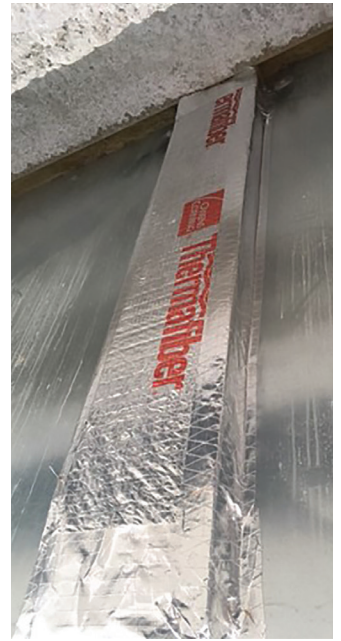
### HOW TO USE

Thermafiber® MCB has a standard length of 24 inches but can (and is able to) be segmented by utilizing perforated break points placed every 4 inches along its length. The bracket is only required to be screwed to the face of the framing at two attachment points, above and below the floor slab, unlike the typical spacing of attachment for traditional methods. Once the Thermafiber® MCB has been fastened to the vertical mullion, the mullion cover is then slid into place and pressed firmly onto the barbs. This method also saves on installation time with interior steel backpan installs since it eliminates the need for an arc welder and cuphead weld pins. In these same steel backpan applications, the Thermafiber® MCB reduces the risk of penetrating or burning a hole in the panel that serves as the vapor barrier in the perimeter fire containment system.

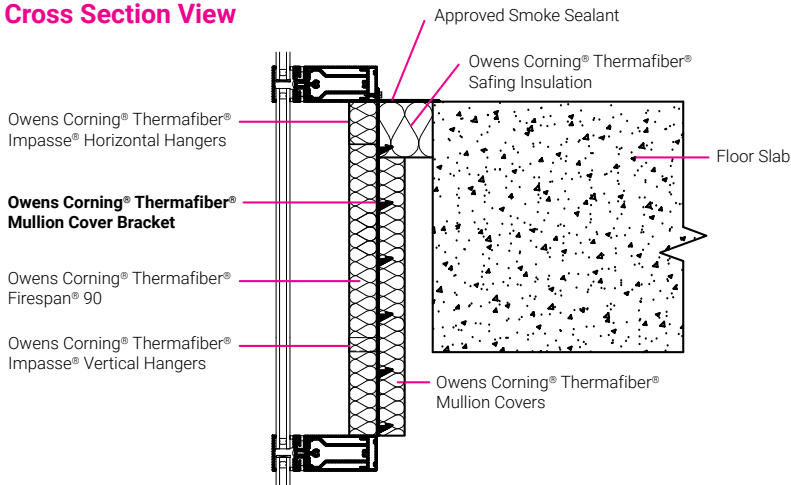
Thermafiber® MCB is now available in a width of 1 7/8 inches, which allows it to be inserted down and in between anchor extrusions that would typically have been difficult to work around. It can also be mixed and matched with traditional methods. For example, the Thermafiber® MCB can be installed in areas where there is limited access, such as in front of a deep slab edge. Spiral anchors can then be used in areas where there is more accessibility.

## Installation Instructions

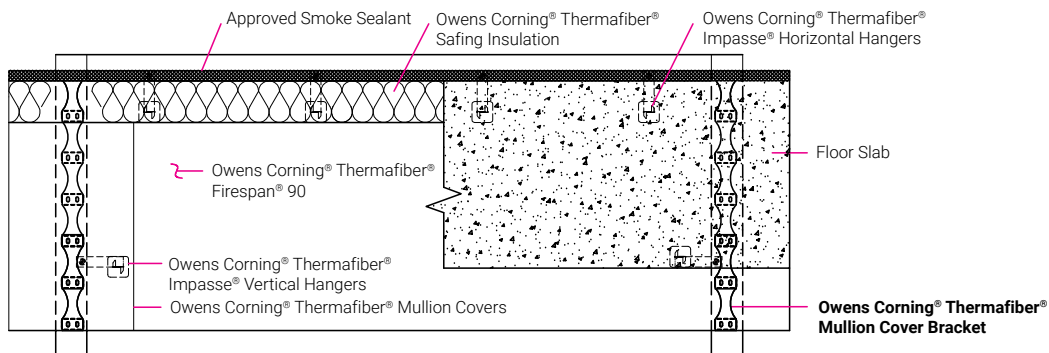
- Place the Mullion Cover Bracket over the face of the vertical framing.
- Attach top of the Mullion Cover Bracket with a #10, Self-tapping screw to the face of the vertical framing member above the slab. (Hooks can be bent flat to prevent interference with the Safing install).
- Attach bottom of the Mullion Cover Bracket with a #10, self-tapping screw to the face of the vertical framing at the bottom of the spandrel area.
- The Mullion Cover Bracket has perforations that allow the bracket to be broken into smaller sections to work around curtain wall anchors and other obstructions.
- Screw attachment spacing not to exceed 24" oc.
- Once the Mullion Cover Bracket is secured to the face of the mullion, the Thermafiber® Mullion Cover Insulation can be impaled onto the Mullion Cover Bracket barbs by pressing down firmly on face of insulation.
- Make sure the Thermafiber® FireSpan® Mullion Cover Insulation is pushed tightly against the Thermafiber® FireSpan® Insulation.



## Cross Section View



## Elevation View



**THERMAFIBER, INC.**  
ONE OWENS CORNING PARKWAY  
TOLEDO, OHIO, USA 43659

**888-TFIBER1 [834-2371]**  
[www.owenscorning.com/thermafiber](http://www.owenscorning.com/thermafiber)