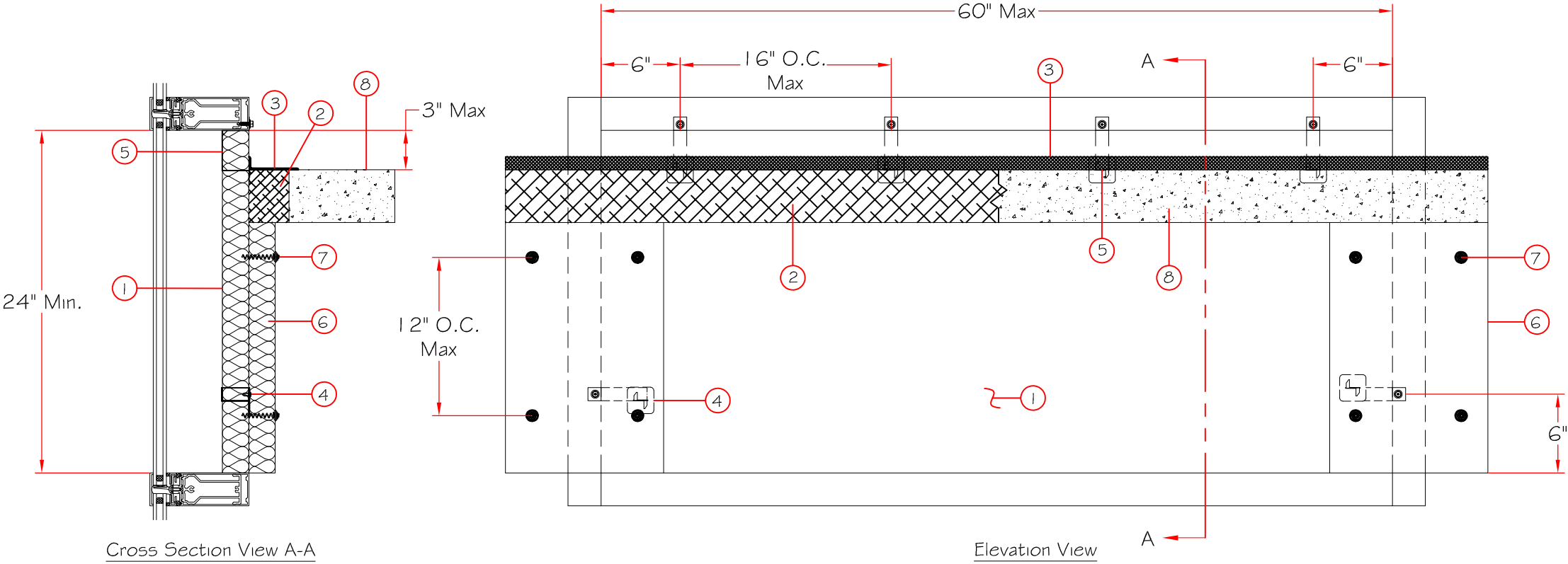


Item Number	Description
1	Min. 2" Thick Owens Corning™ Thermafiber® Firespan® 90 mineral wool insulation.
2	Owens Corning™ Thermafiber® Safing™ Insulation 4 pcf density mineral wool insulation. Cut to a min. 4" width and stacked to a thickness which is min. 25% greater than the width of linear gap between the curtain wall insulation and the edge of the concrete floor slab. Linear opening width 4" Max.
3	RECTORSEAL - Metacaulk 1200 or 1500 Spray, Biostop 750 or 800 Spray or FlameSafe 3000 Spray smoke sealant Min. $\frac{1}{8}$ " thickness, to be applied over anchor plates, Owens Corning™ Thermafiber® Safing™ Insulation and $\frac{1}{2}$ " overlap on floor and curtain wall insulation.
4	Owens Corning™ Thermafiber® Impasse® Vertical Hangers. Vertical hangers screw-attached to the interior face of mullions with number 10 by min $\frac{1}{2}$ " long self-drilling, self-tapping steel screws. (As shown in the drawing)
5	Owens Corning™ Thermafiber® Impasse® Horizontal hangers screw-attached to the transom with number 10 by Min. $\frac{1}{2}$ " long self-drilling, self-tapping steel screws. Owens Corning™ Thermafiber® Impasse® Horizontal hangers located on transom within 6" of mullion at each end and spaced max 16" O.C. and one horizontal hanger screw-attached to the Transom as shown in drawing.
6	Mullion Covers Owens Corning™ Thermafiber® Firespan® 90 2" thick mineral wool insulation faced on one side with aluminum foil/scrims vapor retarder, supplied in Min. 24" x 48" boards. 12" wide strips to be centered over mullions.
7	Owens Corning™ Thermafiber® 3 $\frac{3}{4}$ " Spiral Anchors to be used to secure the framing covers to the curtain wall insulation. Spiral anchors are driven through framing covers and into curtain wall insulation and spaced max 12" O.C.
8	Fire resistance rated concrete floor assembly.



<div>CONFIDENTIAL AND PROPRIETARY INFORMATION OF THERMAFIBER INC.</div> <div>THESE DRAWINGS ARE THE SOLE AND EXCLUSIVE PROPERTY OF THERMAFIBER AND CONTAIN SENSITIVE, PRIVILEGED, OR CONFIDENTIAL INFORMATION WHICH MAY BE USED ONLY FOR ITS BENEFIT. THE DISCLOSURE OF THESE DRAWINGS TO UNAUTHORIZED PERSONS IS STRICTLY PROHIBITED. THIS DOCUMENT AND ALL COPIES MUST BE RETURNED ON DEMAND. NOTE: DETAILS ONLY VALID IF SPECIFIED THERMAFIBER PRODUCTS ARE INSTALLED AS SHOWN.</div> <div>© COPYRIGHT THERMAFIBER INC., 2014</div>	Date		Rev. Num.	Description		Job Name:		DRAWING NUMBER:	
								CW-D-1016	
						Location: City and State:		<div><div>OWENS CORNING®</div><div>Thermafiber®</div></div>	
Reference Design:	CW-D-1016			DATE APRV:    /    /		Drawn By: SPR	Dimensions ± 1/32"	Angle ± 2°	DATE: 03/02/2022