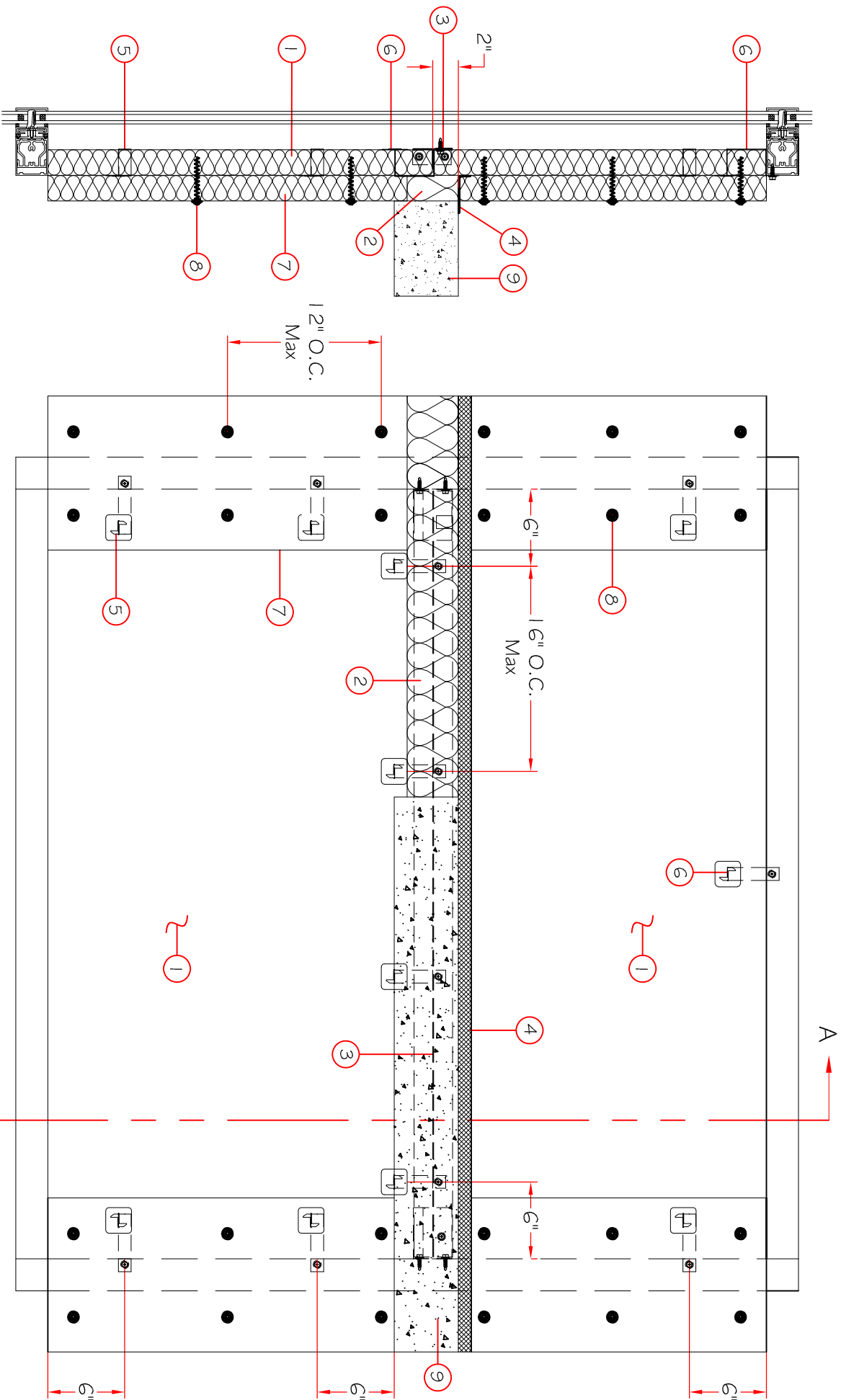


Item Number	Description
1	Min. 2" Thick Owens Corning™ Thermafiber® Firespan® 90 mineral wool insulation.
2	Owens Corning® Thermafiber® Sating™ 4 pcf density mineral wool insulation. Cut to a min. 4½" width and stacked to a thickness which is min. 25% greater than the width of the linear gap between the curtain wall insulation and the edge of the concrete floor slab. Compression fit to attain a min. 25% compression in the thickness direction. The Sating is compressed and inserted cut-edge first into the linear gap such that its top surface is flush with the top surface of the floor assembly. Linear opening width 4" Max.
3	3" Galvanized Steel T-Bar made by placing two 1½" x 1½" 20 gauge steel angles back-to-back to form a "T". 3" Galvanized Steel T-Bar mech. attached to mullions. T-Bar installed between mullions at each floor level to restrain curtain wall insulation against outward movement. T-Bar shall be located with its stem 2" below the top plane of the floor.
4	Rectorseal - Metacaulk 1 200 Spray, Metacaulk 1 200 Caulk Grade or Metacaulk 1 200 SL min. ⅝" thickness, to be applied over anchor plates, Owens Corning™ Thermafiber® Sating™ insulation and ½" overlap on floor and curtain wall insulation.
5	Owens Corning™ Thermafiber® Impasse® Vertical Hangers. Vertical hangers screw-attached to interior face of mullions with number 1 0 by min ½" long self-drilling, self-tapping steel screws. (As shown in drawing)
6	Owens Corning™ Thermafiber® Impasse® Horizontal hangers screw-attached with number 1 0 by Min. ½" long self-drilling, self-tapping steel screws, located on T-Bar within 6" of mullion at each end and spaced max 1 6" O.C. and one horizontal hanger screw-attached to Transom as shown in drawing.
7	Fire resistance rated concrete floor assembly.
8	Mullion Covers Owens Corning™ Thermafiber® Firespan® 90 2" thick mineral wool insulation faced on one side with aluminum foil/scrim vapor retarder, supplied in Min. 24" x 48" boards. 1 2" wide strips to be centered over mullions.
9	Owens Corning™ Thermafiber® 3¼" Spiral Anchors to be used to secure the framing covers to the curtain wall insulation. Spiral anchors driven through framing covers and into curtain wall insulation and spaced max 1 2" O.C.



Cross Section View A-A

Elevation View

<div>CONFIDENTIAL AND PROPRIETARY INFORMATION OF THERMAFIBER INC.</div> <div>THESE DRAWINGS ARE THE SOLE AND EXCLUSIVE PROPERTY OF THERMAFIBER AND CONTAIN SENSITIVE, PRIVILEGED, OR CONFIDENTIAL INFORMATION WHICH MAY BE USED ONLY FOR ITS BENEFIT. THE DISCLOSURE OF THESE DRAWINGS TO UNAUTHORIZED PERSONS IS STRICTLY PROHIBITED. THIS DOCUMENT AND ALL COPIES MUST BE RETURNED ON DEMAND. NOTE: DETAILS ONLY VALID IF SPECIFIED THERMAFIBER PRODUCTS ARE INSTALLED AS SHOWN.</div> <div>© COPYRIGHT THERMAFIBER INC., 2014</div>	Date		Rev. Num.	Description	Job Name:	<div>DRAWING NUMBER:</div> <div>CW-D-2049</div> <div><div><div>OWENS CORNING®</div><div>Thermafiber®</div></div></div>
					Location: City and State:	
Reference Design: CW-D-2049	DATE APPV: / /	Drawn By: SPR	Dimensions ± 1/32"	Angle ±2°	DATE: 03/02/2022	