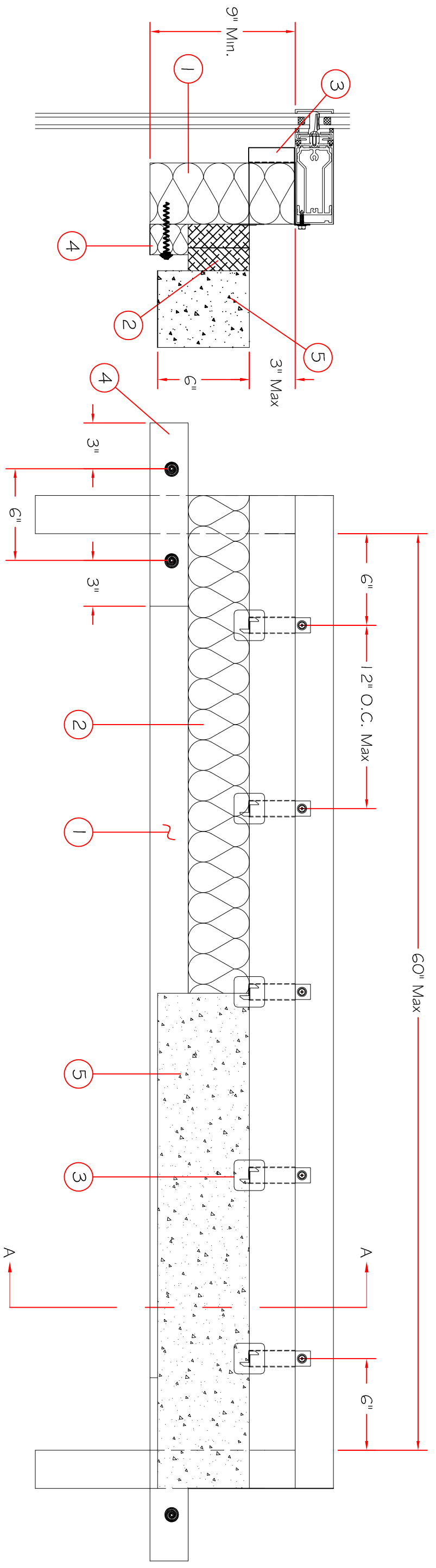


Item Number	Description
1	3" Thick Owens Corning™ Thermafiber® Firespan® 120 mineral wool curtain wall insulation.
2	Owens Corning™ Thermafiber® Sating™ Insulation. Cut to a min. 4" width and stacked to a thickness which is min. 33% greater than the width of linear gap between the curtain wall insulation and the edge of the concrete floor slab.
3	Owens Corning™ Thermafiber® Patent-Pending Impasse 2.0® Horizontal hangers to be attached to the transoms with number 10 by min 1/2" long self-drilling, self-tapping steel screws. Located within 6" of mullion at each end and spaced max 12" O.C.
4	Owens Corning™ Thermafiber® Sating™ Insulation 2 1/2" thick x 12" wide x 2" long strips to be centered over mullions and abutted to the bottom of the Sating Insulation that is installed in linear joint. Secure Owens Corning™ Thermafiber® Sating™ using galv. Owens Corning™ Thermafiber® Spiral Anchors 3/4" driven through Owens Corning™ Thermafiber® Sating™ and into Owens Corning™ Thermafiber® Firespan® 120 mineral wool curtain wall insulation. Owens Corning™ Thermafiber® 3/4" Spiral Anchors placed 3" in from edges (6" apart).
5	6" Thick fire resistance rated floor slab.



CONFIDENTIAL AND PROPRIETARY INFORMATION OF THERMAFIBER INC.

THESE DRAWINGS ARE THE SOLE AND EXCLUSIVE PROPERTY OF THERMAFIBER AND CONTAIN SENSITIVE, PRIVILEGED, OR CONFIDENTIAL INFORMATION WHICH MAY BE USED ONLY FOR ITS BENEFIT. THE DISCLOSURE OF THESE DRAWINGS TO UNAUTHORIZED PERSONS IS STRICTLY PROHIBITED. THIS DOCUMENT AND ALL COPIES MUST BE RETURNED ON DEMAND. NOTE: DETAILS ONLY VALID IF SPECIFIED THERMAFIBER PRODUCTS ARE INSTALLED AS SHOWN.

© COPYRIGHT THERMAFIBER INC., 2014

Date	Rev. Num.	Description

Job Name: **Zero Spandrel System**

Location: City and State:

Angle ±2°

DATE: 02/23/2023

DATE APPV: / /

Drawn By: SPR

Dimensions ± 1/32"

Reference UL Design: TFI/BPF 120-15

DRAWING NUMBER: TFI/BPF 120-15

